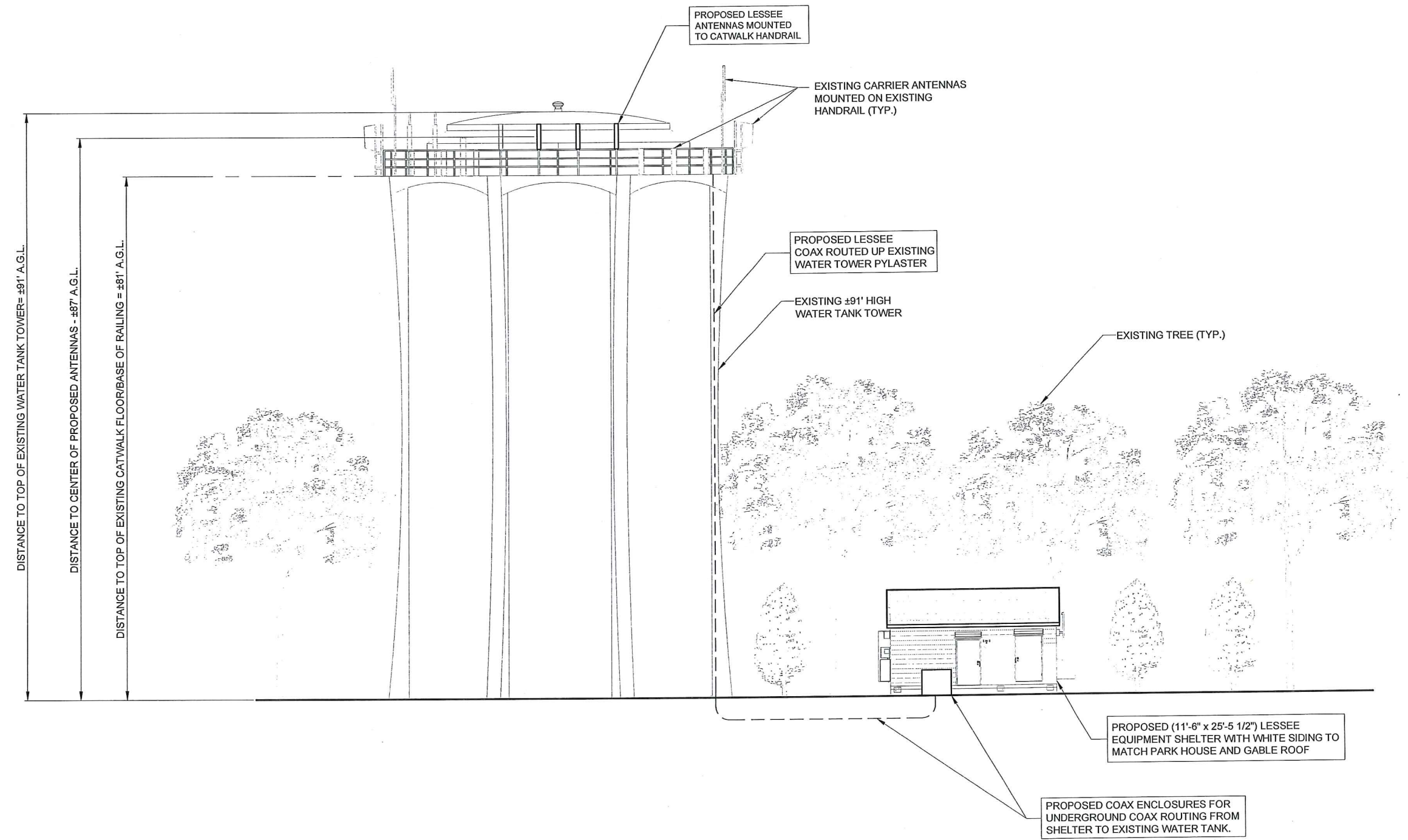


0 1/2" 1" 2"
 SCALE: 1/8" = 1'-0"
 24" x 36" PRINT IS THE FULL SCALE
 FORMAT. ANY SIZE OTHER THAN
 THAT IS AT REDUCED SCALE.



1 SITE ELEVATION
 SCALE: 1/8" = 1'-0"

CHICAGO SMSA
 limited partnership
 d/b/a VERIZON WIRELESS

TERRA CONSULTING GROUP, LTD.
 600 Eusse Highway
 Park Ridge, IL 60068
 Ph: 847 468-6400
 Fax: 847 468-6401

REVISIONS		NO.	DESCRIPTION	DATE	BY
	ISSUED FOR REVIEW			9/11/13	JLR

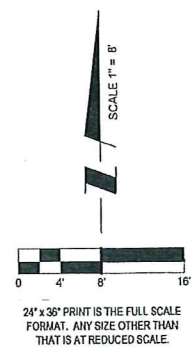
WEBSTER & 172

2612 S. WEBSTER AVE.
 GREEN BAY, WI 54301

DRAWN BY:	JLR
CHECKED BY:	TAZ
DATE:	9/11/13
PROJECT #:	33-1284

SHEET TITLE
 SITE ELEVATION

SHEET NUMBER
ANT-1



CHICAGO SMSA
 limited partnership
 d/b/a VERIZON WIRELESS

TERRA CONSULTING GROUP, LTD.
 6000 BUSINESS CENTER DRIVE, SUITE 200
 GREEN BAY, WISCONSIN 54303
 TEL: 920.457.3631 FAX: 920.558.6707
 WWW.TERRACONSULTING.COM

NO.	DESCRIPTION	DATE	BY	JLR
	ISSUED FOR REVIEW	9/11/13		

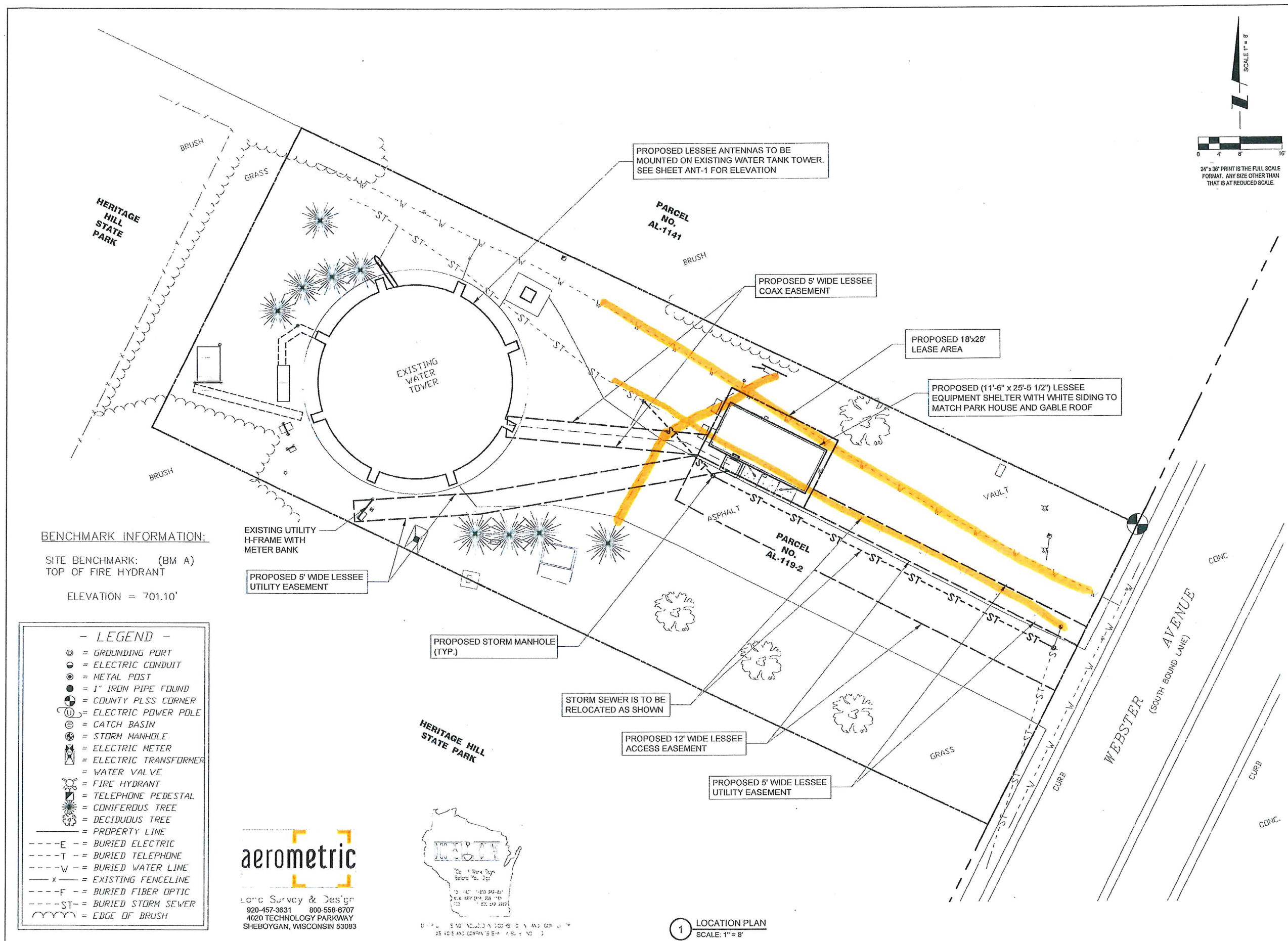
WEBSTER & 172

2612 S. WEBSTER AVE.
 GREEN BAY, WI 54301

DRAWN BY:	JLR
CHECKED BY:	TAZ
DATE:	9/11/13
PROJECT #:	33-1264

SHEET TITLE
LOCATION PLAN

SHEET NUMBER
LP



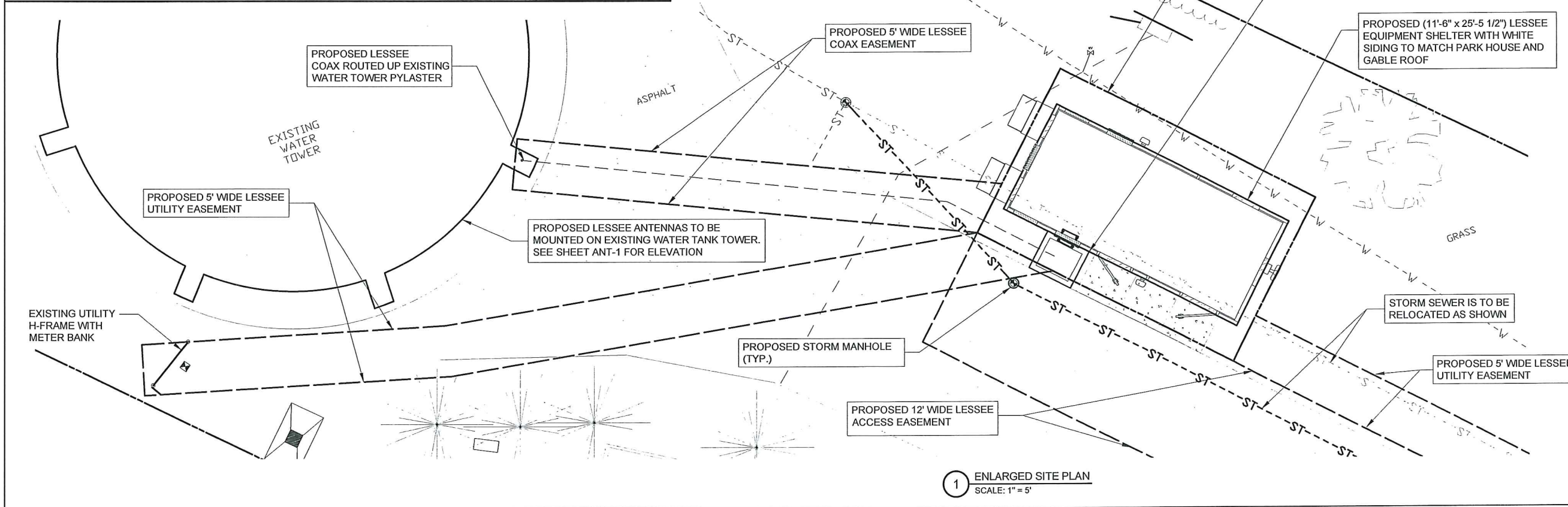
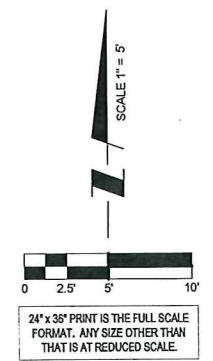
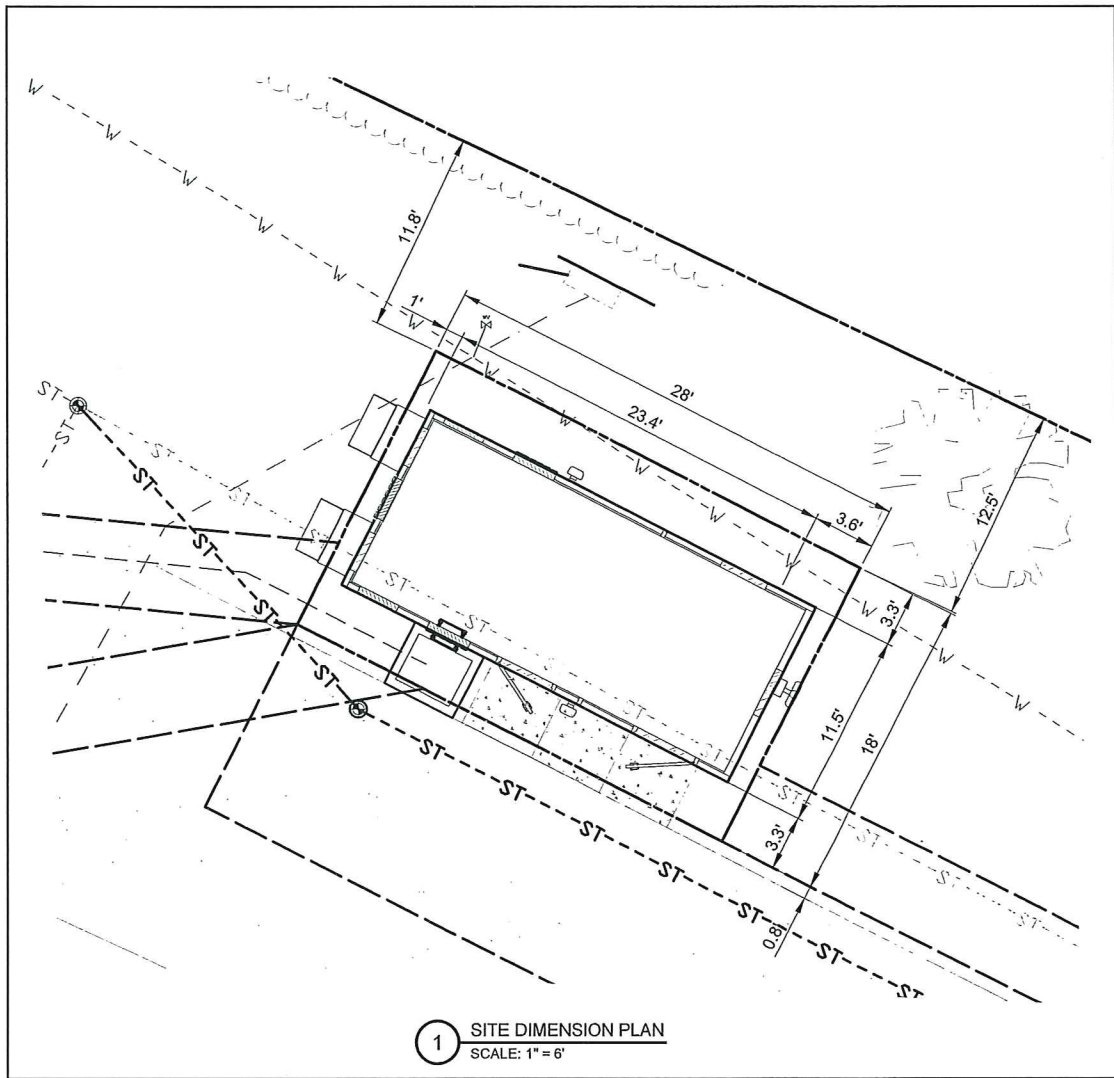
BENCHMARK INFORMATION:
 SITE BENCHMARK: (BM A)
 TOP OF FIRE HYDRANT
 ELEVATION = 701.10'

- LEGEND -**
- ⊙ = GROUNDING PORT
 - ⊖ = ELECTRIC CONDUIT
 - ⊙ = METAL POST
 - ⊙ = 1" IRON PIPE FOUND
 - ⊙ = COUNTY PLSS CORNER
 - ⊙ = ELECTRIC POWER POLE
 - ⊙ = CATCH BASIN
 - ⊙ = STORM MANHOLE
 - ⊙ = ELECTRIC METER
 - ⊙ = ELECTRIC TRANSFORMER
 - ⊙ = WATER VALVE
 - ⊙ = FIRE HYDRANT
 - ⊙ = TELEPHONE PEDESTAL
 - ⊙ = CONIFEROUS TREE
 - ⊙ = DECIDUOUS TREE
 - = PROPERTY LINE
 - - - E - - = BURIED ELECTRIC
 - - - T - - = BURIED TELEPHONE
 - - - W - - = BURIED WATER LINE
 - - - F - - = BURIED FIBER OPTIC
 - - - ST - - = BURIED STORM SEWER
 - - - - - = EDGE OF BRUSH

aerometric
 Land Survey & Design
 920-457-3631 800-558-6707
 4020 TECHNOLOGY PARKWAY
 SHEBOYGAN, WISCONSIN 53083



1 LOCATION PLAN
 SCALE: 1" = 8'



CHICAGO SMSA
limited partnership
d/b/a VERIZON WIRELESS

TERRA CONSULTING GROUP, LTD.
600 Busse Highway
Park Ridge, IL 60068
Ph: 847.698-6400
Fax: 847.698-6401

NO.	DESCRIPTION	DATE	BY
	ISSUED FOR REVIEW	9/11/13	JLR

WEBSTER & 172

2612 S. WEBSTER AVE.
GREEN BAY, WI 54301

DRAWN BY:	JLR
CHECKED BY:	TAZ
DATE:	9/11/13
PROJECT #:	33-1264

SHEET TITLE
ENLARGED SITE PLAN

SHEET NUMBER
C-1