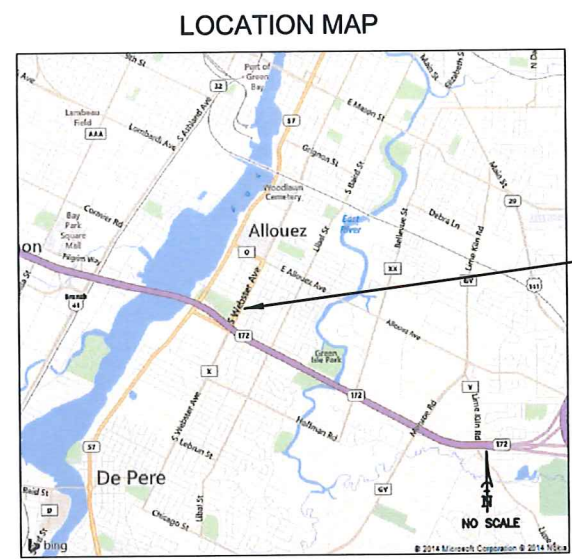


INDEX OF SHEETS	
DRAWING NO.	DESCRIPTION:
C1.1	SITE PLAN
C1.2	TOPOGRAPHIC SURVEY
C2.1	DEMOLITION PLAN
C3.1	DRAINAGE & EROSION CONTROL PLAN
C4.1	DETAIL SHEET

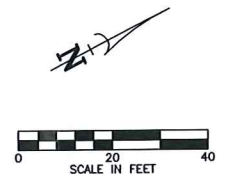
PERTINENT CONTACT		CONTACT PERSON	PHONE
ENGINEER: MARTENSON & EISELE, INC.		MARY JO MILLER, PE	920-731-0381
OWNER: HERITAGE HILL STATE HISTORICAL PARK		NICK BACKHAUS	920-448-5150 EXT. 114

PROPOSED PARKING STALLS			
	STANDARD	HANDICAP	TOTAL
NORTH LOT	66	0	66
SOUTH LOT	49	5	54
TOTAL	115	5	120



**SITE PLAN LEGEND**

- ASPHALTIC CONCRETE PAVEMENT
- CONCRETE PAVEMENT / SIDEWALK
- PROPOSED PARKING SPACES
- FLOW OF TRAFFIC



**Martenson & Eisele, Inc.**  
 Planning  
 Environmental  
 Surveying  
 Engineering  
 Architecture  
 1377 Midway Road  
 Menasha, WI 54952  
 www.martenson-eisele.com  
 info@martenson-eisele.com  
 920.731.0381 1.800.236.0381

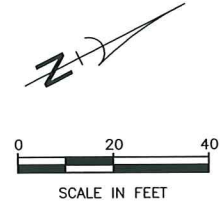
NO.	DATE	E/AE	DRAWN BY	APPROVED	
				FIELDWORK	REVISION

**PARKING LOT IMPROVEMENTS**  
**SITE PLAN**  
**HERITAGE HILL STATE PARK**  
 VILLAGE OF ALLOUEZ, BROWN COUNTY, WISCONSIN

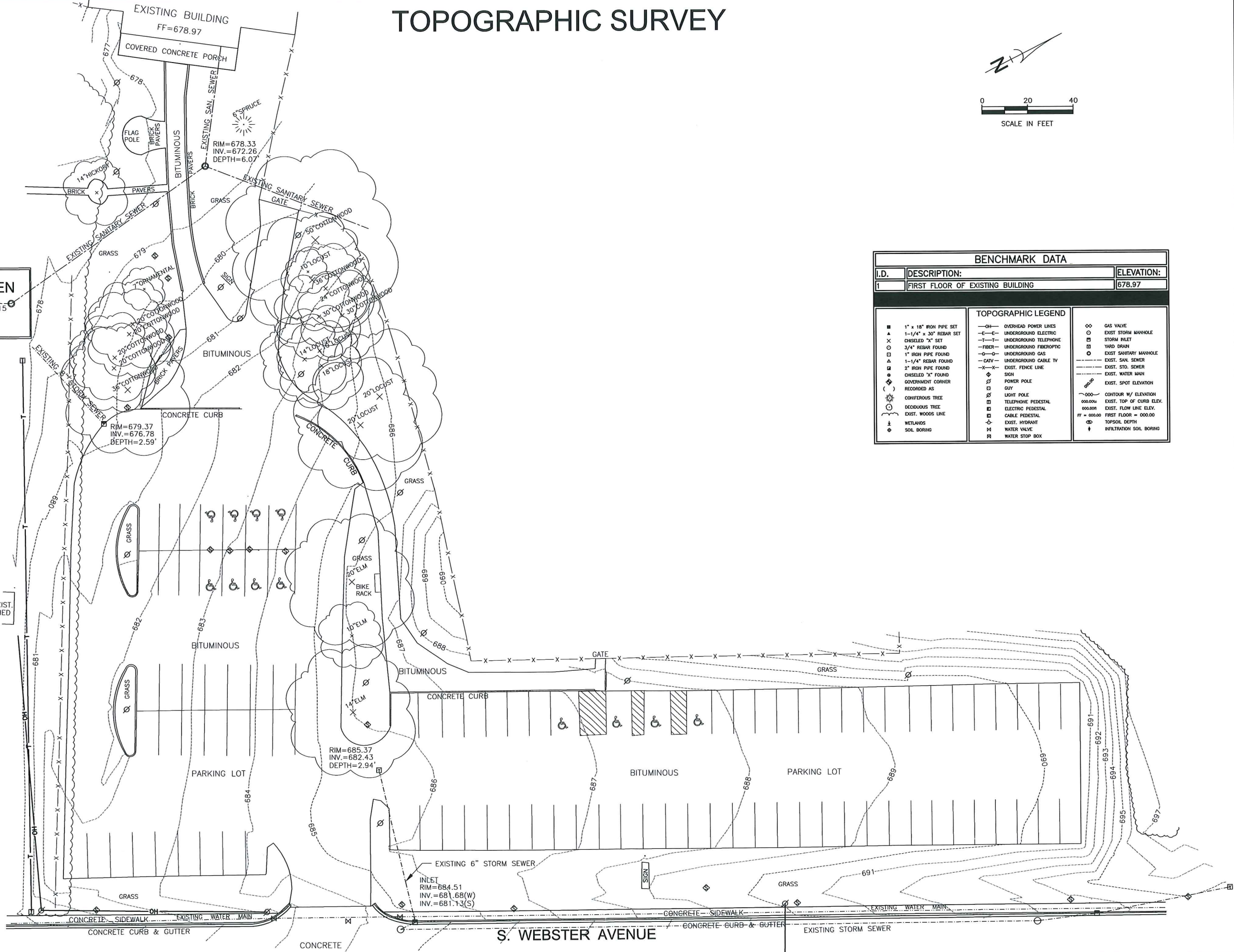
SCALE	DATE
BAR SCALE	1/5/15
COMPUTER FILE	
1-0521-001de.dwg	

DRAWING NO.  
C1.1

# TOPOGRAPHIC SURVEY



S. VAN BUREN STREET  
RIM=677.15



BENCHMARK DATA		
I.D.	DESCRIPTION:	ELEVATION:
1	FIRST FLOOR OF EXISTING BUILDING	678.97

TOPOGRAPHIC LEGEND		
■ 1" x 18" IRON PIPE SET	—OH— OVERHEAD POWER LINES	⊙ GAS VALVE
▲ 1-1/4" x 30" REBAR SET	—E— UNDERGROUND ELECTRIC	⊙ EXIST STORM MANHOLE
⊙ CHISELED "X" SET	—T— UNDERGROUND TELEPHONE	⊙ STORM INLET
⊙ 3/4" REBAR FOUND	—F— UNDERGROUND FIBEROPTIC	⊙ YARD DRAIN
⊙ 1" IRON PIPE FOUND	—G— UNDERGROUND GAS	⊙ EXIST SANITARY MANHOLE
▲ 1-1/4" REBAR FOUND	—CATV— UNDERGROUND CABLE TV	—S— EXIST. SAN. SEWER
⊙ 2" IRON PIPE FOUND	—X—X— EXIST. FENCE LINE	—SS— EXIST. STD. SEWER
⊙ CHISELED "X" FOUND	⊙ SIGN	—W— EXIST. WATER MAIN
⊙ GOVERNMENT CORNER	⊙ POWER POLE	—SE— EXIST. SPOT ELEVATION
( ) RECORDED AS	⊙ GUY	—000— CONTOUR W/ ELEVATION
⊙ CONFEROUS TREE	⊙ LIGHT POLE	000.00± EXIST. TOP OF CURB ELEV.
⊙ DECIDUOUS TREE	⊙ TELEPHONE PEDESTAL	000.00M EXIST. FLOW LINE ELEV.
⊙ EXIST. WOODS LINE	⊙ CABLE PEDESTAL	FF = 000.00 FIRST FLOOR = 000.00
⊙ WETLANDS	⊙ EXIST. HYDRANT	⊙ TOPSOIL DEPTH
⊙ SOL. BORING	⊙ WATER VALVE	⊙ INFILTRATION SOL. BORING
	⊙ WATER STOP BOX	

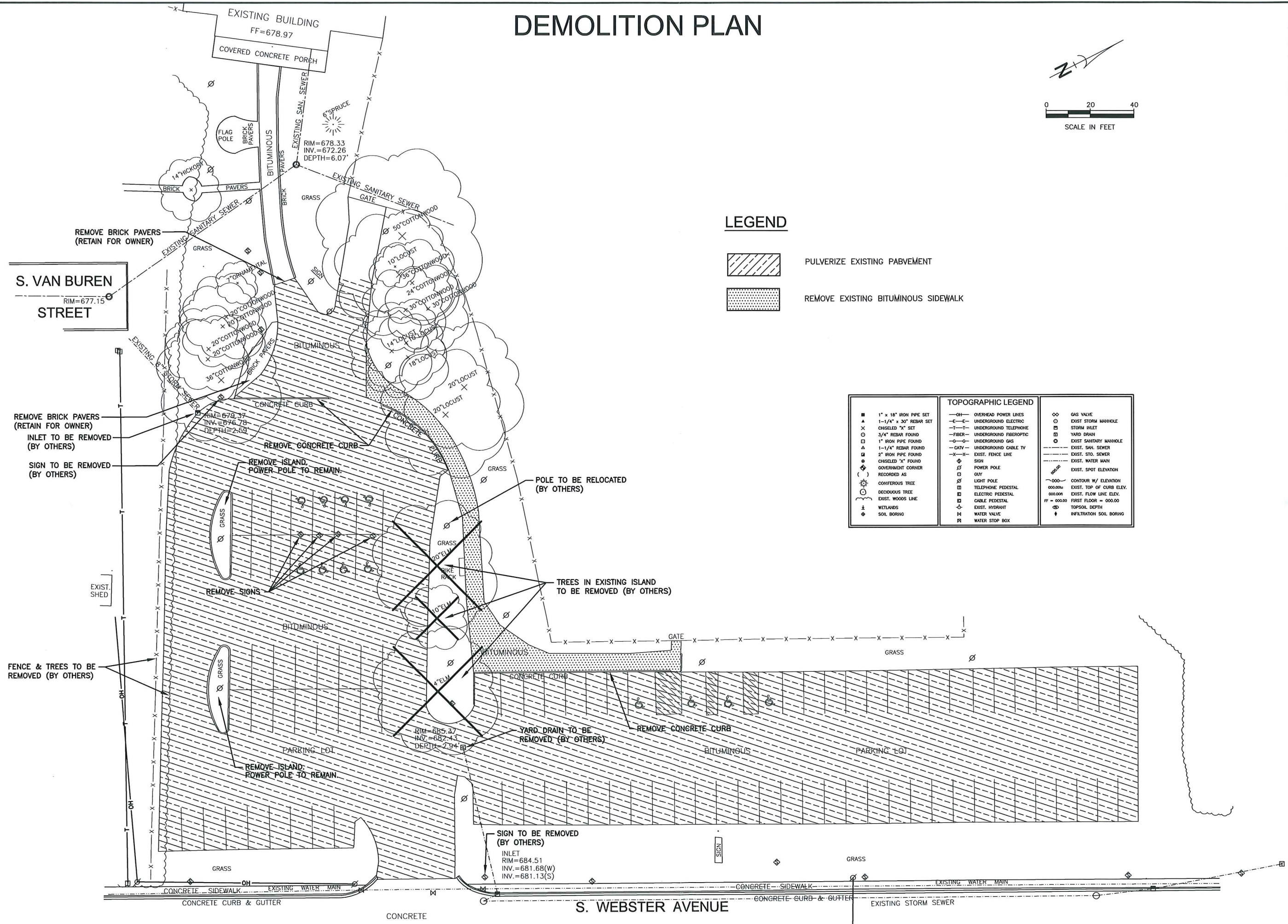
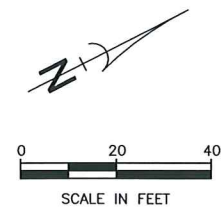
**Martenson & Eisele, Inc.**  
 Planning  
 Environmental  
 Surveying  
 Engineering  
 Architecture  
 1377 Midway Road  
 Menasha, WI 54952  
 www.martenson-eisele.com  
 info@martenson-eisele.com  
 920.731.0381 1.800.236.0381

PARKING LOT IMPROVEMENTS  
 TOPOGRAPHIC SURVEY  
 HERITAGE HILL STATE PARK  
 VILLAGE OF ALLOUEZ, BROWN COUNTY, WISCONSIN

SCALE  
 BAR SCALE 1-6-15  
 COMPUTER FILE  
 1-0521-001L.dwg

DRAWING NO.  
 C1.2

# DEMOLITION PLAN



## LEGEND

- PULVERIZE EXISTING PAVEMENT
- REMOVE EXISTING BITUMINOUS SIDEWALK

SYMBOLS		TOPOGRAPHIC LEGEND	
■	1" x 18" IRON PIPE SET	—OH—	OVERHEAD POWER LINES
▲	1-1/4" x 30" REBAR SET	—E—	UNDERGROUND ELECTRIC
×	CHESEBOLD "X" SET	—T—	UNDERGROUND TELEPHONE
○	3/4" REBAR FOUND	—F—	UNDERGROUND FIBEROPTIC
□	1" IRON PIPE FOUND	—G—	UNDERGROUND GAS
△	1-1/4" REBAR FOUND	—CATV—	UNDERGROUND CABLE TV
■	2" IRON PIPE FOUND	—X—	EXIST. FENCE LINE
□	CHESEBOLD "X" FOUND	◇	SIGN
◇	GOVERNMENT CORNER	○	POWER POLE
( )	RECORDED AS	○	GUY
⊙	CONFEROUS TREE	○	LIGHT POLE
⊙	DECIDUOUS TREE	□	TELEPHONE PEDESTAL
⊙	EXIST. WOODS LINE	□	ELECTRIC PEDESTAL
⊙	WETLANDS	□	CABLE PEDESTAL
⊙	SOIL BORING	◇	EXIST. HYDRANT
		⊙	WATER VALVE
		⊙	WATER STOP BOX
		○	GAS VALVE
		○	EXIST STORM MANHOLE
		□	STORM INLET
		□	YARD DRAIN
		○	EXIST SANITARY MANHOLE
		—	EXIST. SAN. SEWER
		—	EXIST. STO. SEWER
		—	EXIST. WATER MAIN
		○	EXIST. SPOT ELEVATION
		—	CONTOUR W/ ELEVATION
		—	EXIST. TOP OF CURB ELEV.
		—	EXIST. FLOW LINE ELEV.
		FF =	000.00 FIRST FLOOR = 000.00
		⊙	TOPSOIL DEPTH
		⊙	INFILTRATION SOIL BORING

**Martenson & Eisele, Inc.**  
 Planning  
 Environmental  
 Surveying  
 Engineering  
 Architecture

1377 Midway Road  
 Menasha, WI 54952  
 www.martenson-eisele.com  
 info@martenson-eisele.com  
 920.731.0381 1.800.236.0381

NO.	DATE	DRAWN BY AMS	CHECKED JFS	APPROVED	REVISION	

**PARKING LOT IMPROVEMENTS**  
**DEMOLITION PLAN**  
**HERITAGE HILL STATE PARK**  
 VILLAGE OF ALLOUEZ, BROWN COUNTY, WISCONSIN

SCALE: BAR SCALE  
 DATE: 1/6/15  
 COMPUTER FILE: 1-0521-001demo.dwg