

SCALE
1"=50'

DRAWN BY
MRA

Site Plan

Mau & Associates
LAND SURVEYING & PLANNING
& WATER RESOURCE ENGINEERING
Phone: 920-434-9670 Fax: 920-434-9672

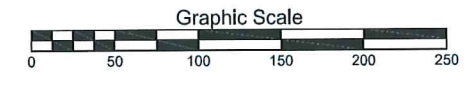
Hillcrest Lumber, Inc.

PROJECT NO.
M-19191
SHEET NO.
1 of 1
DRAWING NO.
S-2453

Part of
Haven Way, A Condominium

All of Lot 2, Volume 51, Certified Survey Maps, page 178, Map Number 7501, Document Number 2257858, Brown County Records, said Lot being located in part of Private Claim 14, East Side of the Fox River, in the Village of Allouez, Brown County, Wisconsin.

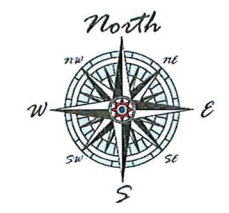
~ An Expandable Condominium ~



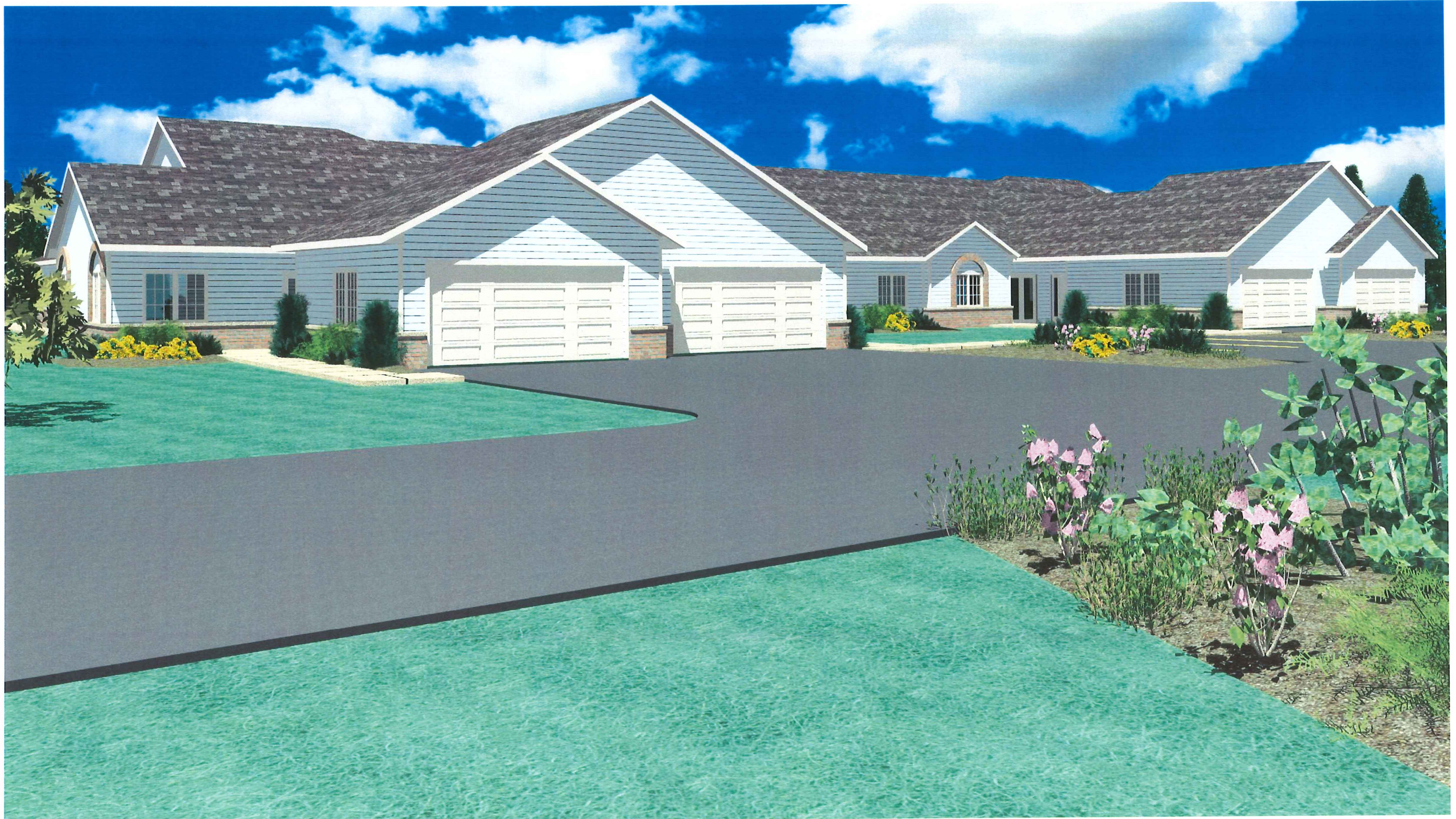
Expandable Area
55,229 sq. ft.
1.27 acres

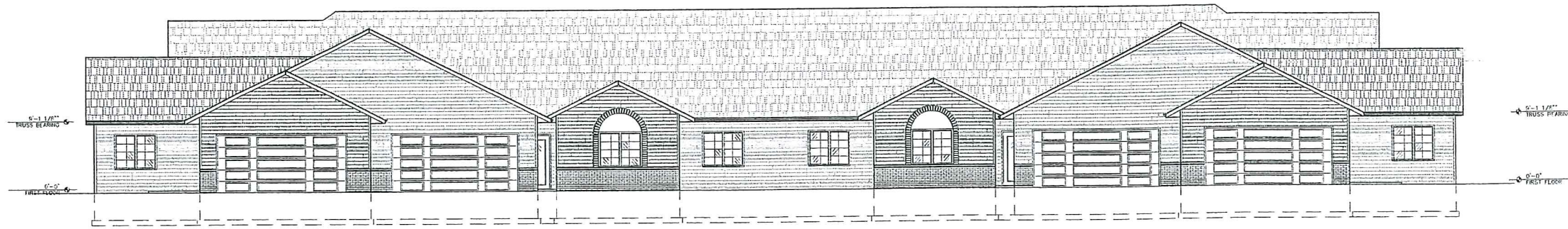
Legend

- existing building
- proposed building
- existing pavement
- proposed pavement

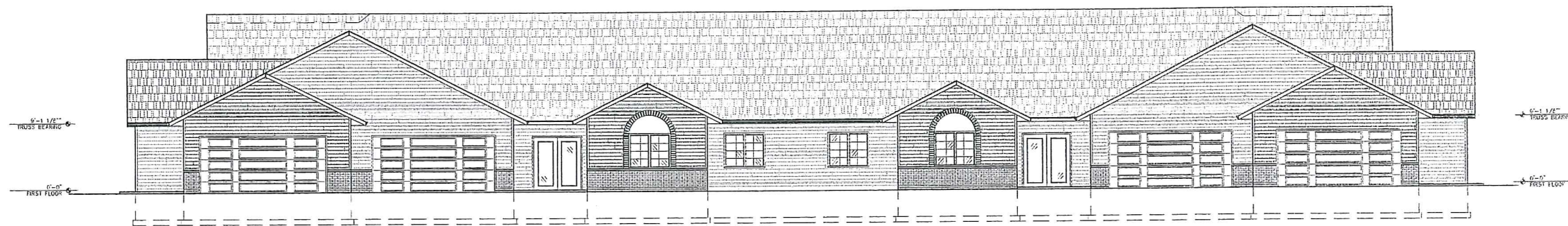


PROJECT CALCULATIONS:
60 UNITS
Total Parcel = 10.77 Ac. (100.0%)
Green Space = 4.86 Ac. (45.1%)
Units = 2.97 Ac. (27.6%)
Pavement = 2.94 Ac. (27.3%)
Density = 5.57 Units/Ac.

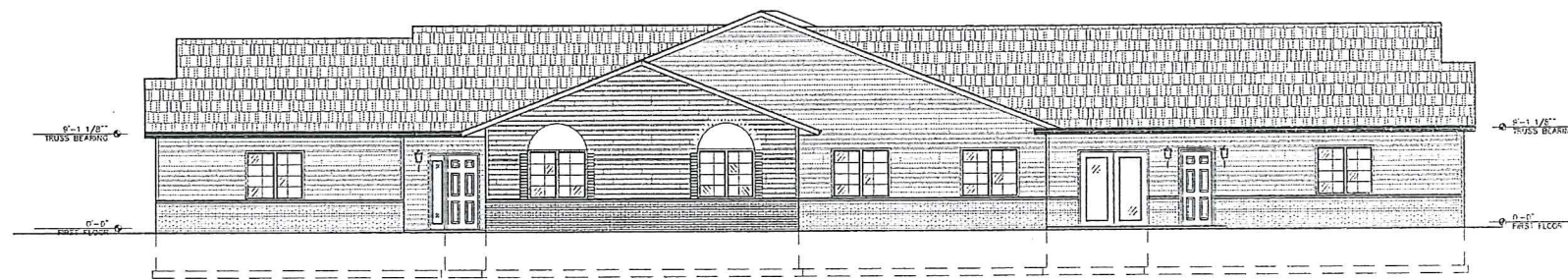




FRONT ELEVATION
SCALE: 1/8"=1'-0"



REAR ELEVATION
SCALE: 1/8"=1'-0"

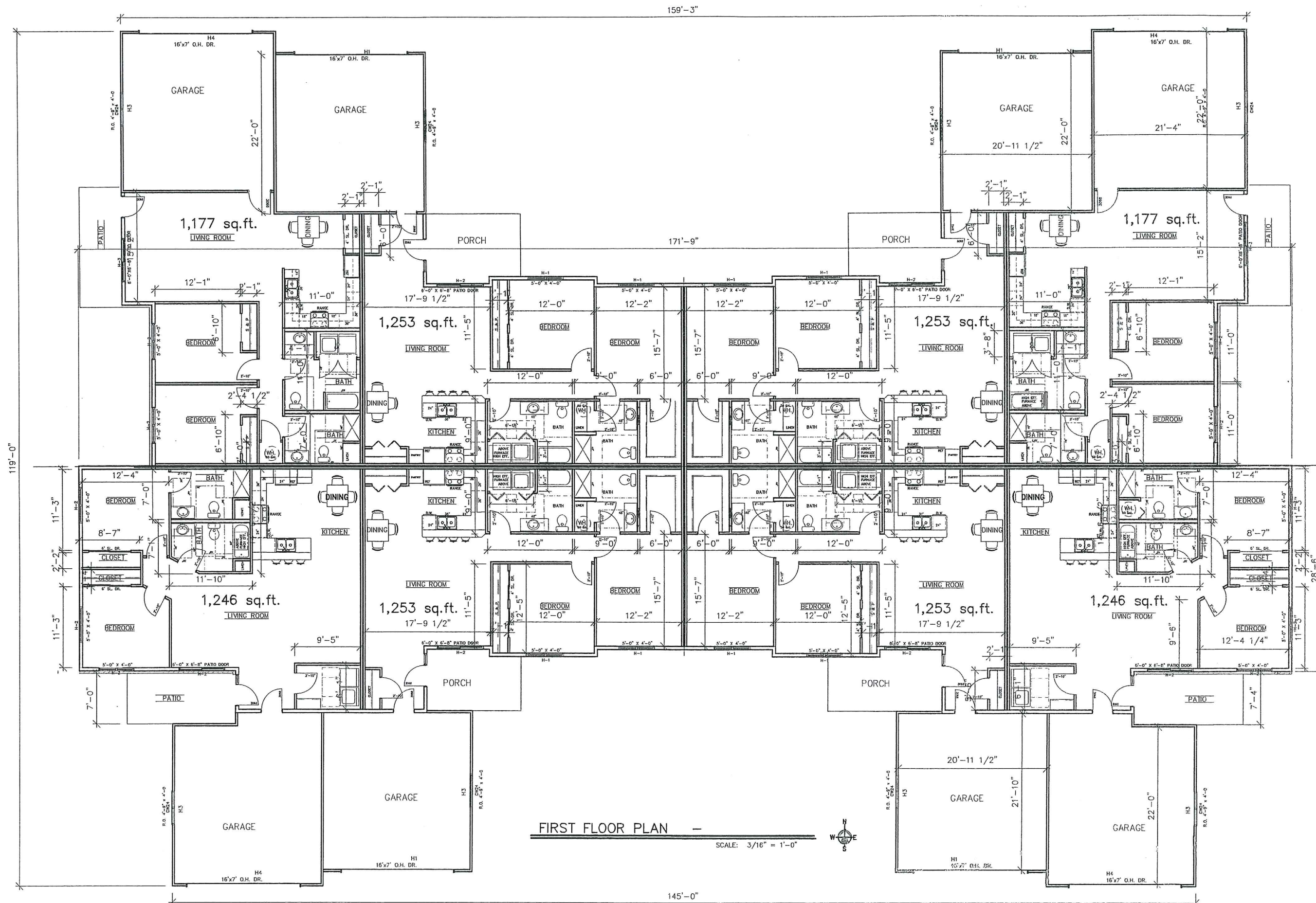


SIDE ELEVATION
SCALE: 1/8"=1'-0"



SIDE ELEVATION
SCALE: 1/8"=1'-0"

4/13/15



FIRST FLOOR PLAN
 SCALE: 3/16" = 1'-0"
 N
 S

4/13/15