

## Memo

Date: March 11, 2016

To: Village Board

From: Brad Lange

Re: Fiber Optics Connection and NEWEYE

The 2016 budget contains \$14,503 in the Capital Improvement Plan to connect the Village Hall to Brown County's Fiber Optics. A cost estimate was prepared by Multimedia Communications & Engineering, Inc. in 2014 (attached) and verified in 2015, which includes the design, project oversight, and materials. However, the City of DePere recently connected with the City of Green Bay, thus using the fiber that would have been available for Allouez to use, so a new line will need to be pulled from the BCCAN Handhole on the east side of Libal Street to Handhole on Grignon St at a cost of \$4,300. Additionally, it was not anticipated that a Wiscnet router would be needed and since it is, a onetime cost of \$2,285 would need to be added to the total project. I have attached a breakdown of all the cost on the attached page for the fiber optics connection.

The Board had also discussed and agreed to participate in the NEWEYE program at a cost of 10% of the Village's Cable Franchise fee or \$16,800 in 2016. The Board discussed using the Stadium Tax Refund to cover NEWEYE in 2016. If the Board's wishes are to livestream board s and/or committee meetings, we will need to purchase and install some necessary equipment and I have included those numbers on the attached page.

The Village Board is asked to approve going out for bids for the fiber optics connection, including the additional cost which will be covered by the CIP fund. The Board is also asked to give direction, including funding source, on the purchasing of necessary equipment to livestream board and committee meetings. Should the Board agree to use the Stadium Tax Refund to cover the necessary equipment, then it would be necessary to create a Resolution and place it on the agenda of an upcoming meeting as required by the Department of Revenue

for expending any funds from the Stadium Tax Refund. The Board could also move to use fund balance or include the costs in the 2017 budget discussions.

Thank you

# Fiber Optics Connection

&

## NEWWEYE

### Current Budget:

\$14,503 placed in CIP  
\$4,019.88 current funds budgeted for DSL  
**\$18,522.88**

### Costs to bring Fiber Optics into Village Hall estimate

MC&E Engineering -	\$2,163
MC&E Project Management -	\$1,268
One time permit and fees -	\$25
Materials -	\$695
Underground construction -	\$9,323
Splicing and termination -	<u>\$1,029</u>
	<b>\$14,503</b>

### Costs to Change to Wiscnet as the provider:

Annual fee -	\$6,000
Annual membership -	\$1,500
Wisnet Router - onetime charge -	<u>\$2,285</u>
	<b>\$9,785</b>

### Costs to connect to Brown County and Green Bay

Hardware & Labor for Brown Cty & GB \$4300

### Cost associated with NEWWEYE:

2016 Fees -	\$16,800*
Mounted Cameras (2) -	\$ Still waiting on the cost
Wireless projector -	\$ Still waiting on the cost
Flat screen -	\$ Still waiting on the cost

\*It was discussed during budget preparation that funds to cover annual fees would come from Stadium Tax Refund.



# Village of Allouez BCCAN Connection Estimate Document 08-27-14

Prepared By:



**Multimedia Communications & Engineering, Inc.**

*PO Box 11064 Green Bay, WI 54307-1064 ph (920) 676-0494*

***Placing technology at your fingertips***

## Contents

Cover Letter .....	2
Project Route Map .....	3
Route Summary .....	3
Price Estimate .....	4
Next Steps .....	4



**Multimedia Communications & Engineering, Inc.**

*PO Box 11064 Green Bay, WI 54307-1064 ph (920) 676-0494*

***Placing technology at your fingertips***

---

Wednesday August 27<sup>th</sup>, 2014

Mr. Neil Cameron  
Village of Allouez  
1900 Libal Street  
Green Bay, WI 54301

Dear Mr. Cameron,

Thank you for allowing Multimedia Communications & Engineering, Inc. the opportunity to provide a price estimate for your connection into the Brown County Fiber Optic Network (BCCAN). We have prepared this estimate using conservative prices gathered from recent bidding processes for underground construction and materials.

I have included a small map that also shows the proposed route based on the conversation we had during our meeting on site.

Please feel free to contact me with any questions or comments.

Thank you again for the opportunity to provide this price estimate. I look forward to hearing from you after you've had a chance to review the information.

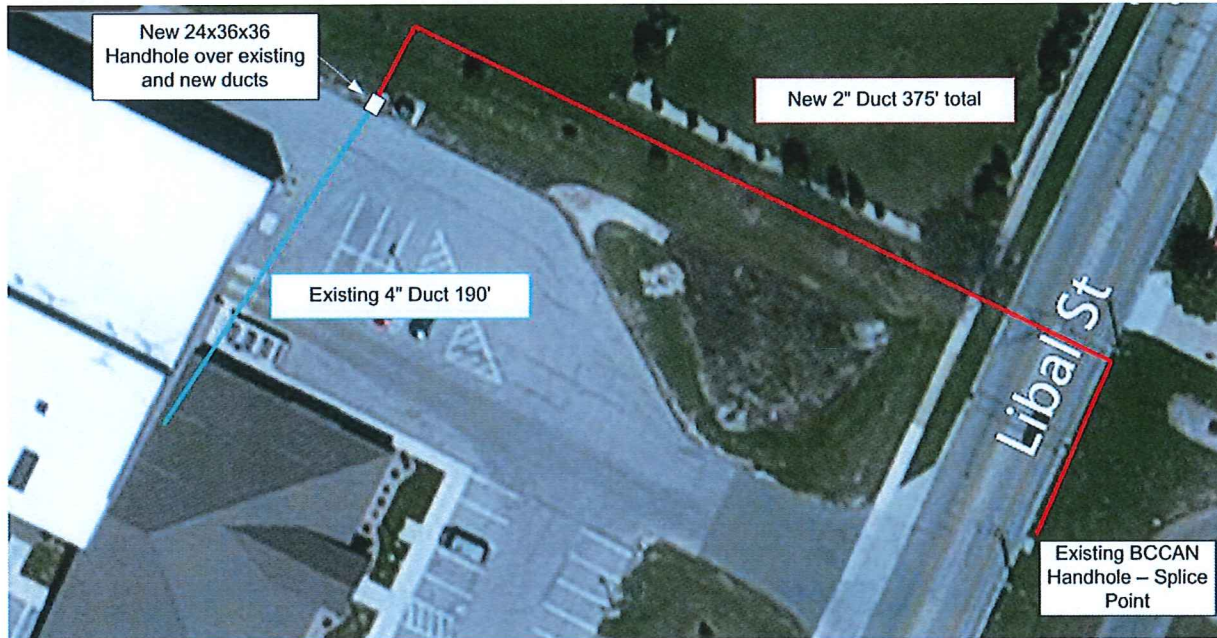
Sincerely,

Dan Becker  
Fiber Optic Network Design Specialist





## Project Route Map



## Route Summary

The proposed route will begin within the Village Offices and extend north using the existing 4" ducts that run beneath the parking lot. At the north side of the parking lot the 4" ducts will be exposed and the new 2" duct will be routed from this point to the existing BCCAN Handhole on the east side of Libal Street. A new handhole will be placed where the 4" duct and 2" duct meet on the north side of the parking lot.

A new 12 strand fiber optic cable will be installed through the existing 4" and new 2" ducts to the BCCAN Handhole. At the BCCAN handhole/splice point, 2 strands of the 12 strand cable will be spliced into BCCAN strands that extend to the County Data Hub at the Sophie Beaumont building in downtown Green Bay and 4 strands will be spliced into BCCAN strands that extend out to the UWGB/Wiscnet location.

Once complete the village will be tied into the County Data Network for county data access and the Wiscnet Network for High Speed Internet access.



## Price Estimate

The below estimates represent the entire cost to build the connection. They do not include BCCAN Fiber Network Fees or Wiscnet Fees. Pricing for connections to BCCAN and Wiscnet will have to be generated by those respective entities.

MC&E ENGINEERING	\$2,163.57
MC&E PROJECT MANAGEMENT	\$1,268.36
ONE TIME PERMITS AND FEES	\$25.00
MATERIAL	\$695.00
UNDERGROUND CONSTRUCTION	\$9,320.98
SPLICING AND TERMINATION	\$1,029.60
<b>GRAND TOTAL</b>	<b>\$14,502.51</b>

## Next Steps

Once it is determined that this project can move forward, the below items will be completed from the start of the project through its completion.

### Underground/Fiber Engineering

- a. Identify existing utilities along the entire underground route with GPS equipment producing sub-centimeter mapping accuracy
- b. Identify location of new duct/fiber
- c. Submit proposed route to Village for approval
- d. Assist with BCCAN Network access and strand mapping
- e. File any necessary permit applications

### CAD Services (Engineering)

- a. Creation of CAD plans scaled to 1"=50' showing all underground route placement information to include location of existing utilities
- b. Creation of CAD drawings showing logical layout of fiber optic cable plant and termination fields
- c. Creation of CAD Overview map indicating general route and grid outlining the 1"=50' detailed map locations.
- d. Creation of detailed splicing tables for fiber optic cable fusion splicing





**RFP Creation**

- a. Creation of written labor specification outlining bidding procedures, contractor requirements, and scope of project.
- b. Creation of written material specification for procurement of fiber optic cable and accessories
- c. Coordination of Bidder walkthrough
- d. Creation of all necessary Addendums
- e. Bid response analysis

**Project Management**

- a. Distribution of plans and specifications to selected contractor
- b. On-site Management of duct/cable installation per Village and other authorized agency requirements
- c. Preparation of weekly project progress reports
- d. Reception and inventory of project materials
- e. Distribution of project materials to contractor
- f. Coordination with representatives from Village to ensure placement of duct per permitting requirements
- g. Validation of contractor invoices
- h. Validation of material vendor invoices