

Memo

To: Historic Preservation Committee

Fr: Trevor Fuller, Planning and Zoning Administrator

Re: ACTION RE: SELECTION OF ROBINSON HILL RESIDENTIAL HISTORIC DISTRICT FOR DISTRICT KICKOFF MEETING

Date: 20 May 2016

The Historic Preservation Committee hosted a dedication ceremony and open house on May 10th at the Allouez Water Department Building. The open house was an opportunity for property owners whose properties are eligible for the National Register to learn about the benefits and next steps of having a property listed on the National Register.

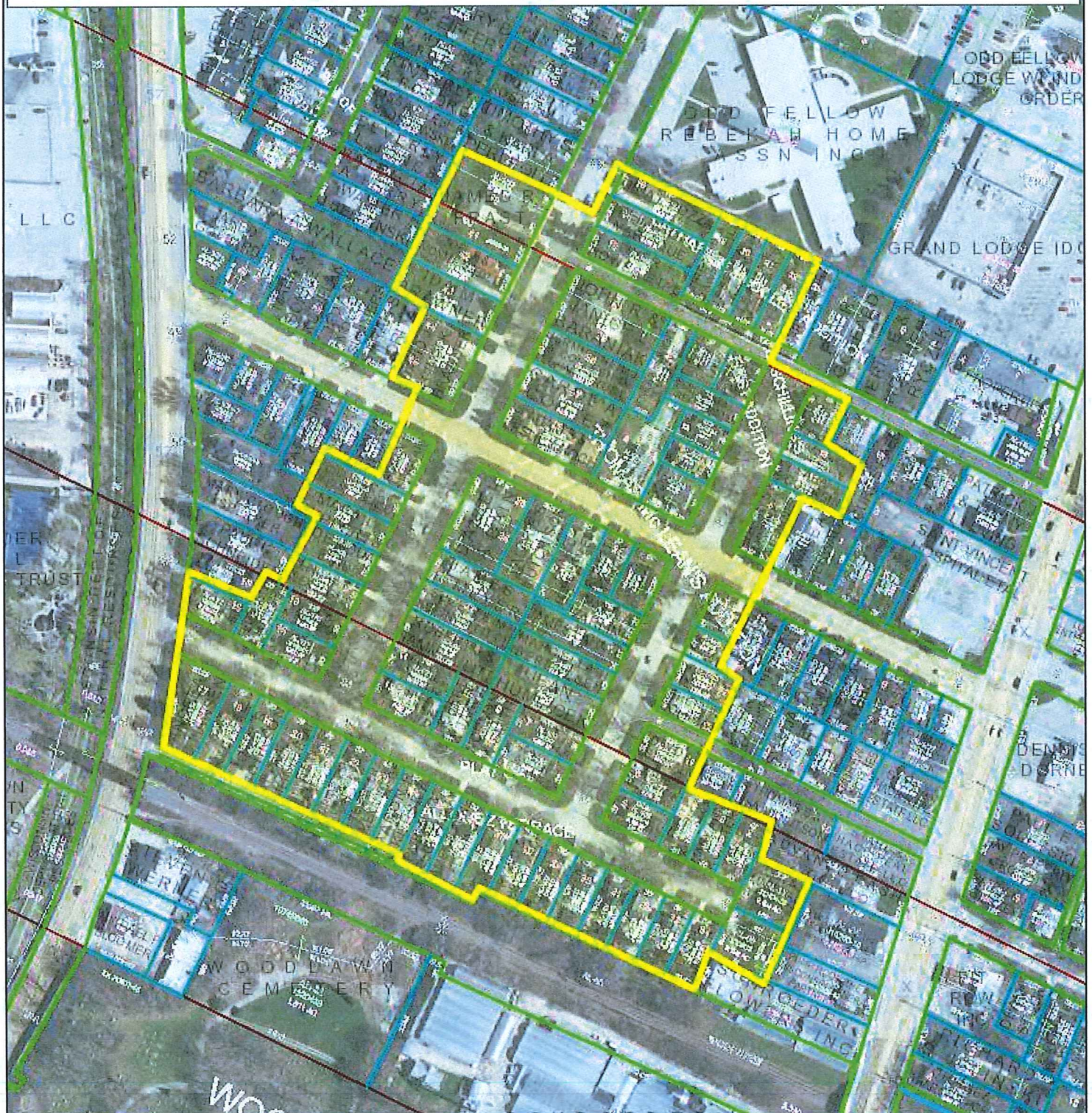
The committee was hoping to gauge which eligible listings had the most support or interest in listing on the National Register. Of the attendees that represented eligible properties that are not already being pursued for nomination, all were from the Robinson Hill Residential Historic District. This district is our largest eligible district, with 86 homes (see attached).

A district kickoff meeting is required to be held in June in order to be eligible to apply for the CLG grant this fall. This district kickoff meeting will also be an opportunity to see if there is larger interest than who came to the open house.

Staff recommends moving forward with hosting a district kickoff meeting in conjunction with our June committee meeting for the Robinson Hill Residential Historic District.

The Historic Preservation Committee is asked to decide whether or not to move forward with having a district kickoff meeting for Robinson Hill Residential Historic District.

Robinson Hill Historic District



Map provided by the Brown County Planning & Land Services Department - Land Information Office (LIO)

A map key (legend) and other information about this map is available at: maps.gis.co.brown.wi.us

This map is intended for advisory purposes only. It is based on sources believed to be reliable, but Brown County distributes this information on an "As Is" basis. No warranties are implied. Boundaries shown on this map are general representations only and should not be used for legal documentation, boundary survey determinations, or other property boundary issues.

02/25/2015
Scale 1:2400