



NOTICE!

EMERALD ASH BORER FOUND IN ALLOUEZ

The Village of Allouez has identified Emerald Ash Borer (EAB) within the village limits. A tree located along the East River north of Wiese Park in the southeast end of the village was positively identified for being infested with EAB in April of 2017. This is the first positive find within the community. Previously, EAB had been located in the City of Green Bay (2009), City of DePere (2016), Village of Howard (2017), and the Village of Ashwaubenon (2017). At this time, the Village Allouez will continue to investigate suspect ash trees for signs of EAB infestation and manage accordingly.

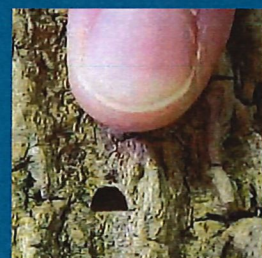
The Emerald Ash Borer only affects true ash trees; white ash, green ash, and black ash. Mountain ash is not a true ash and is not in jeopardy of EAB infestation. Signs of EAB include flecking bark from woodpecker activity, split bark, serpentine "S" galleries under the bark from the borer, thinning crown, water sprouts, and "D" shaped holes in the bark.

Movement of firewood, wood products, and brush is prohibited outside of the EAB quarantine area which includes most of southern Wisconsin including Brown, Outagamie, Kewaunee, Door, Calumet, and Manitowoc Counties.

If you suspect your ash tree has EAB, you can contact a local tree service or the Village's Urban Forestry Division. For more information on EAB in the Village of Allouez, including chemical treatment options, please visit our webpage at

www.villageofallouez.com/depts/forestry/emerald-ash-tree/.

Village of Allouez Parks,
Recreation, and
Forestry Department



Village of Allouez Parks,
Recreation, and Forestry
Department

1900 Libal St.
Green Bay, WI 54301

Phone: 920-448-2805

E-mail: chrisc@villageofallouez.com