

WEBSTER ELEMENTARY ADDITION AND REMODEL
GREEN BAY AREA PUBLIC SCHOOL DISTRICT
 GREEN BAY, WISCONSIN

Project: 6774

Date: 11/14/2017

Drawing: C002

This drawing may not be reproduced without the written permission of Somerville, Inc. Permission or copies of this drawing may be obtained by emailing: Plans@somervilleinc.com

11/14/2017 9:53:30 AM

© Somerville, Inc. 2017

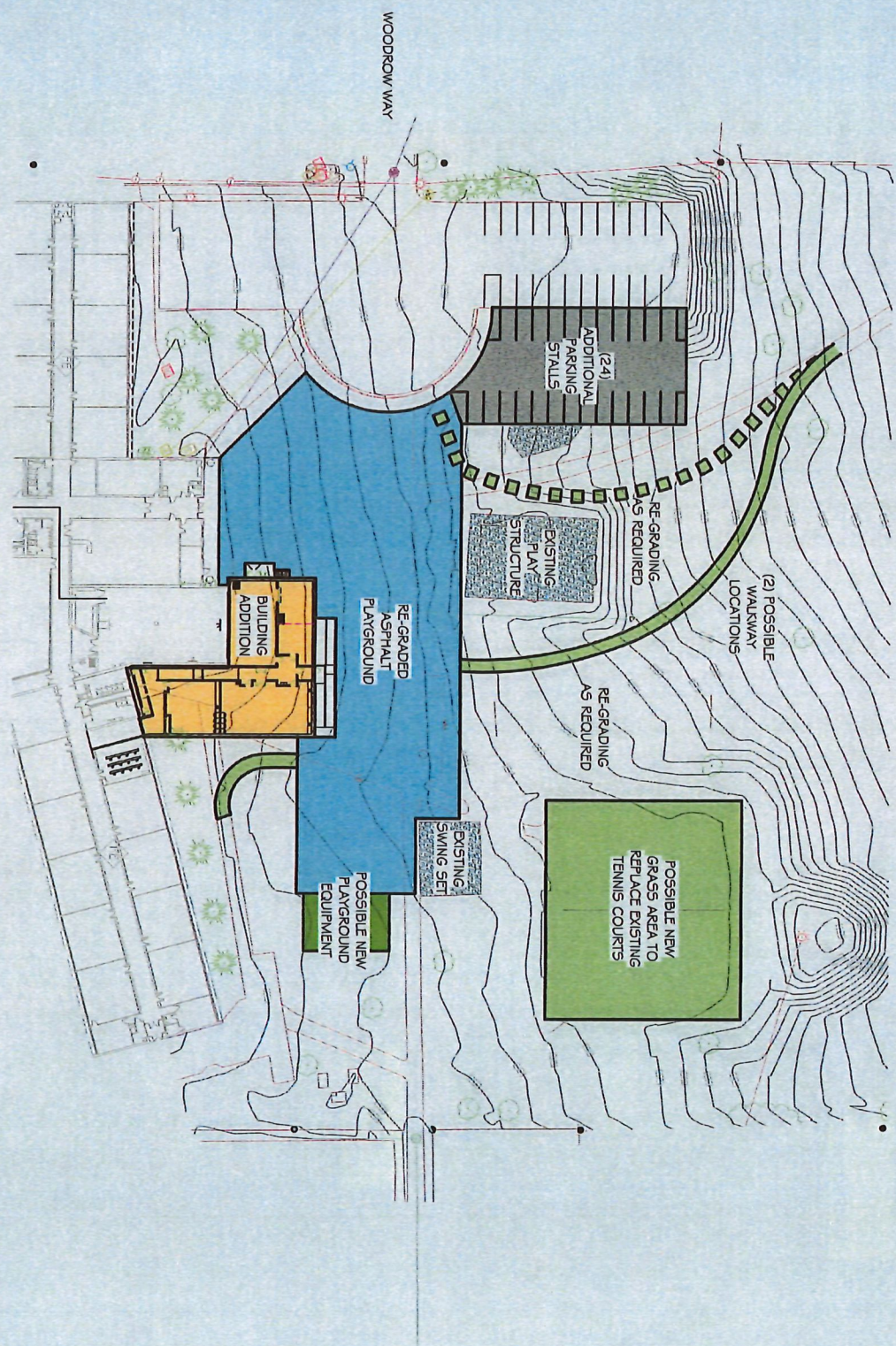


somerville
 architects|engineers

Somerville, Inc. | 2100 Riverside Drive, Green Bay, WI 54301-2390
 P 920.437.8136 | F 920.437.1131 | www.somervilleinc.com

designmatters-

PARTIAL SITE PLAN CONCEPT
SCALE: 1" = 60'-0"



WEBSTER ELEMENTARY ADDITION AND REMODEL
GREEN BAY AREA PUBLIC SCHOOL DISTRICT
 GREEN BAY, WISCONSIN

Project: 6774 Date: 11/14/2017 Drawing: C001

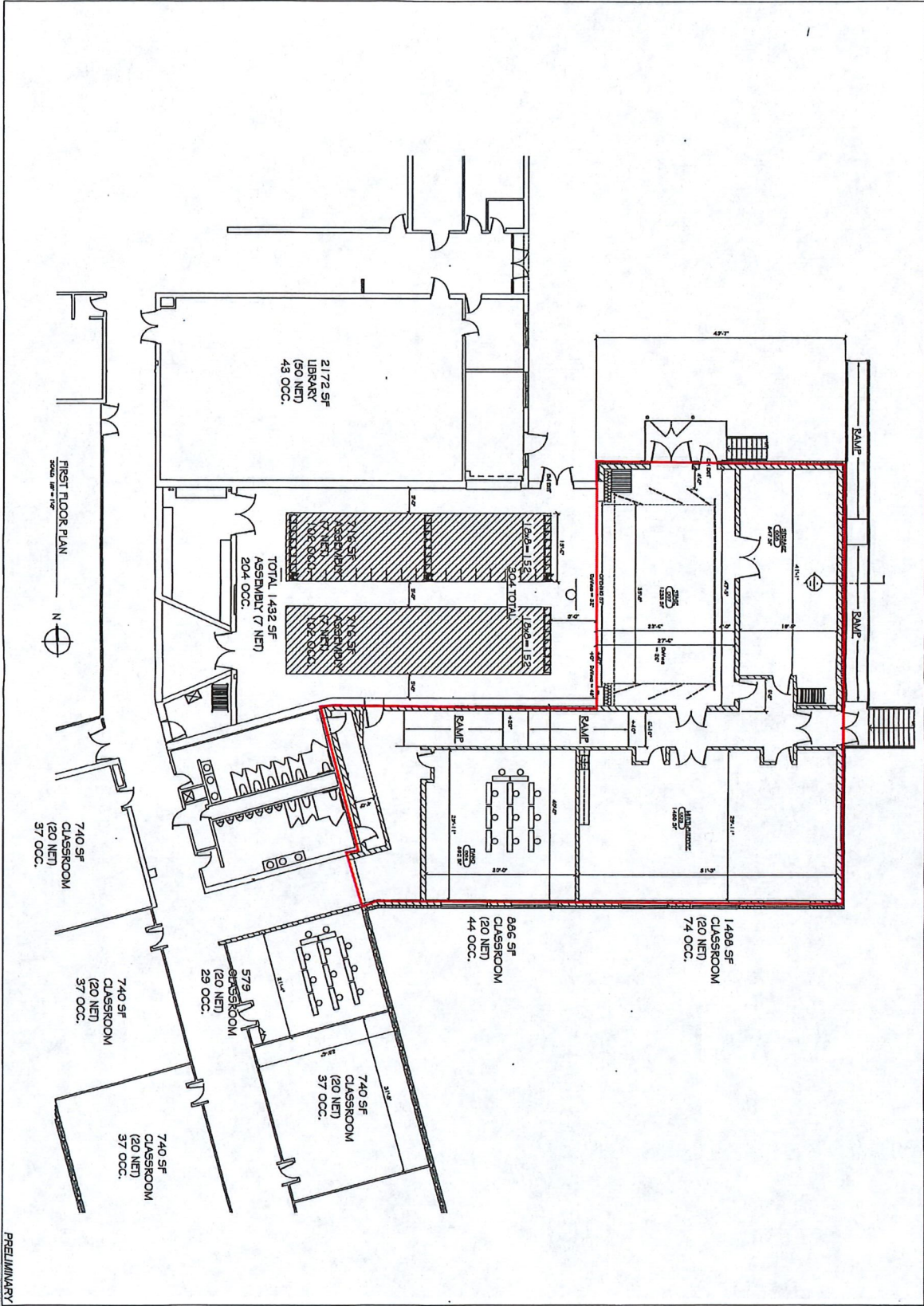
This drawing may not be reproduced without the written permission of Somerville, Inc. Permission or copies of this drawing may be obtained by emailing: PlanRequests@somervilleinc.com

11/15/2017 7:05:41 AM © Somerville, Inc. 2017



Somerville, Inc. | 2109 Riverside Drive, Green Bay, WI 54301-2390
 P 920.437.6136 | F 920.437.1131 | www.somerville-inc.com

designmatters.



PRELIMINARY

Sheet
10/06/2017
2/7/18
A01

WEBSTER ELEMENTARY ADDITION AND REMODEL
GREEN BAY AREA PUBLIC SCHOOL DISTRICT
GREEN BAY, WISCONSIN

Revisions	Description	Date


This drawing was prepared and issued by a registered professional in the State of Wisconsin, U.S.A. The design and construction of this project may be affected by any changes to the applicable Wisconsin Code. © Somerville, Inc. 2017

somerville
architectural engineers

design matters.

Somerville, Inc. | 2110 Riverside Drive, Green Bay, WI 54901-2210
P 920.437.6126 | F 920.437.1131 | www.somervilleinc.com




 Aerial Photo Date
 April 2017

The Village of Alouez provides this drawing and data regardless of form for informational and reference purposes only. Locations and measurements are approximate and are not intended to be substitutes for on site inspections and measurements. The user of this document agrees to hold the Village of Alouez harmless for any use other than for reference purposes only.

WEBSTER ELEMENTARY SCHOOL /
 VILLAGE OF ALLOUEZ
 POTENTIAL LAND SWAP

