

Memo

To: Village Board

From: Chris Clark, Director of Parks, Recreation, & Forestry

Re: Award Contract for Green Isle Parking Lot Reconstruction Project

Date: May 5, 2020

Background Information:

The parking lots and roadway at Green Isle Park are in poor condition and in need of replacement. The asphalt lots are approximately 30+ years old, are showing deterioration, and are at a point of disrepair. With the size of this project, the lots and the roadway were separated into two different bonding cycles of 2019 and 2021, with parking lots in 2019/20 and roadway in 2021/22. In 2019, the village bonded \$270,000 toward the first phase of the project.

The Green Isle Park parking lot portion of the project includes the reconstruction of the lots by the pavilion, baseball diamond, park shop, small shelter/softball diamond, and tennis courts. The roadway phase of the project, slated for 2021, will reconstruct the road from the trail crossing by the north park entrance through the woods to the softball diamond parking lot on the south side as well as the driveway leading to the pavilion.

An updated engineering estimate of \$342,500 was prepared by our consultant, Ayres Associates in early 2020. Due to this coming in more than initially anticipated, we decided to separate one parking lot (tennis court lot) out of this project and include it as an alternate bid item in order to give us options with our current funding depending on how bids would come in. The bids for this project, including the alternate bid, came in below the estimates.

The bidding summary is below.

Green Isle Park – Parking Lots	MCC, Inc.	Northeast Asphalt	Vinton Construction	Peters Concrete Co.
Base Bid (lots 1-3)	252,243.50	257,391.25	259,811.65	269,621.50
Alternate #1 (tennis ct)	75,654.13	74,451.25	73,311.70	78,029.75
TOTAL	327,897.63	331,842.50	333,123.35	347,651.25

Previous Information/Action:

This project was approved in the 2019 Parks Capital Improvement projects and was subsequently carried over into 2020 due to permitting issues as well as the higher costs associated with projects in 2019.

Budget Item/Funding:

This project will be funded utilizing bonding and fund balance from the Parks Capital Improvement Fund, Fund 47. This item was approved in the FY2019 Capital Improvement budget and was bonded for in the 2019 borrowing at \$270,000.

Fund 47 has a fund balance of \$432,050 and will have a sufficient amount to cover all planned 2020 projects as well as fund the Alternate #1 from this project. This would provide an estimated end of year balance in Fund 47 of \$62,800 to carry over for projects in 2021.

Staff Recommendation:

Staff recommends approval of the project to the low bidder, MCC Inc., at a base bid of \$252,243.50 and to include the Alternate Bid #1 in the amount of \$75,654.13 for a total project cost of \$327,897.63.

Possible Board Motion:

The Village Board could make a motion to:

- Award the base bid to the low bidder, MCC Inc, in the amount of \$252,243.50
- Award the base bid and include Alternate #1 for a total amount of \$327,897.63 to the low bidder, MCC Inc.
- Reject all bids
- Other

Attachments:

- Recommendation Letter from Ayres Associates
- Bid Tabulation
- Green Isle Park Site Map



Ingenuity, Integrity,
and Intelligence.

April 29, 2020

Chris Clark, Parks, Recreation & Forestry Director
Village of Allouez
1900 Libal Street
Green Bay, WI 54301

Re: Green Isle Park Paving – Parking
Village of Allouez

Dear Mr. Clark:

At the bid opening on April 23, 2020 at 2:00 PM Local Time, four bids were received for the referenced project as shown on the attached bid tabulation. The apparent low bidder is MCC, Inc., Appleton, WI with a base bid amount of \$252,243.50.

The bid forms appear to be complete and in order. The apparent low bid amount is within estimate for the project. Therefore, we recommend award of the contract to the apparent low bidder as listed above.

An alternate bid was also received from for Alternate Bid No. 1 – Parking Lot 4 for an additional amount of \$75,654.13 This amount appears to be reasonable for the work. You may accept or reject this alternate at your discretion considering available finances.

If you should have any questions on contract award, please contact me. Please let us know when you have approved award of the contract.

Sincerely,

Ayres Associates Inc

Craig R. Schuh, PE
Manager – Engineering Services, Green Bay
920.366.0970
SchuhC@AyresAssociates.com

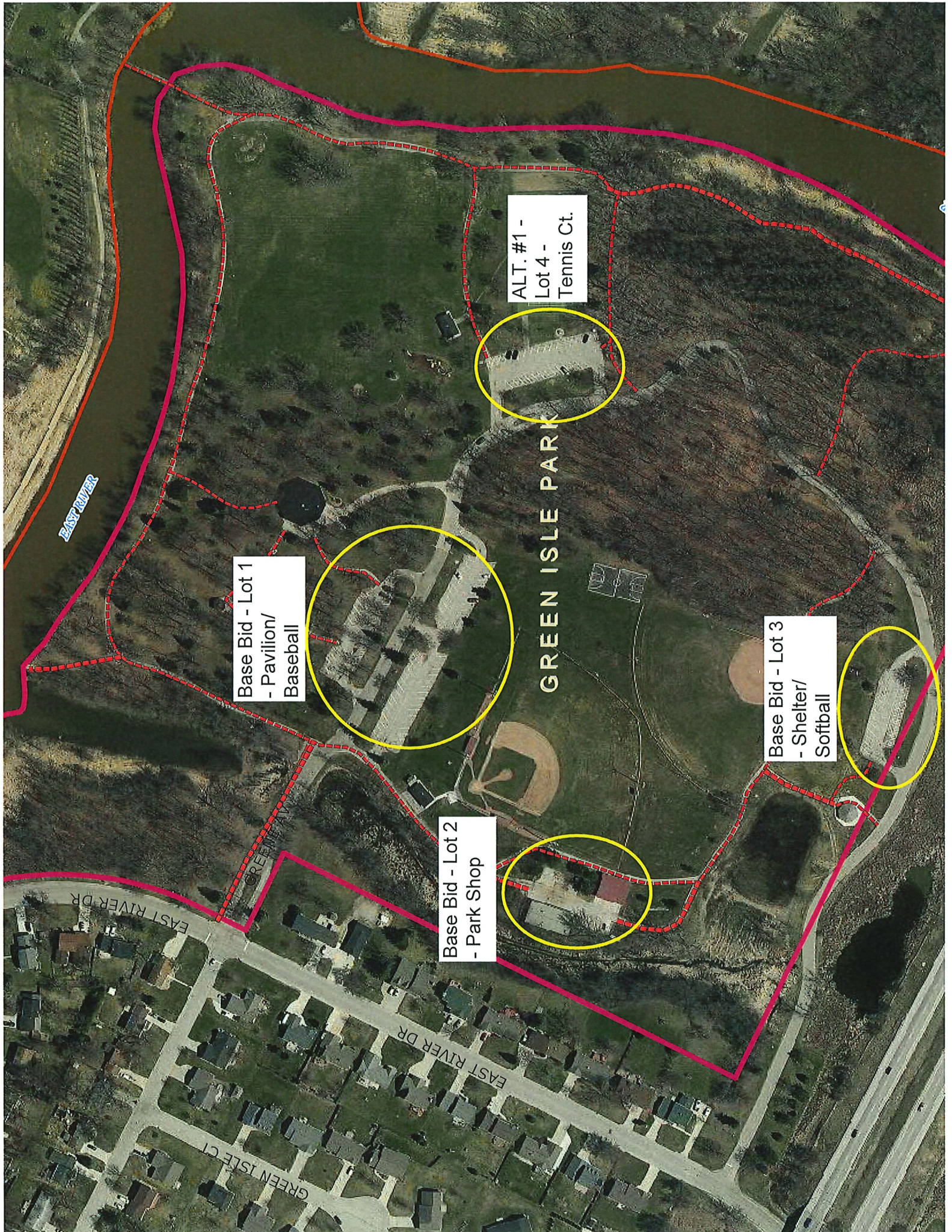
Enclosure: Bid Tabulation





BID TABULATION

PROJECT:		MCC, Inc.		Northeast Asphalt, Inc.		Vinton Construction Company		Triple P, Inc dba Peters Concrete Co.	
Green Isle Park Paving - Parking Village of Allouez		P.O. Box 1137 Appleton, WI 54912-1137 920.749.3360		1524 Atkinson Drive Green Bay, WI 54303 920.494.0543		1322 33rd Street Two Rivers, WI 54241 920.882.0375		1516 Atkinson Drive Green Bay, WI 54303 920.494.3700	
BID DEADLINE:		UNITS		TOTAL PRICE		TOTAL PRICE		TOTAL PRICE	
April 23, 2020 2:00 pm, Local Time		QUANTITY	UNIT PRICE	UNIT PRICE	UNIT PRICE	UNIT PRICE	UNIT PRICE	UNIT PRICE	UNIT PRICE
DESCRIPTION		QUANTITY	UNIT PRICE	UNIT PRICE	UNIT PRICE	UNIT PRICE	UNIT PRICE	UNIT PRICE	UNIT PRICE
BASE BID (Parking Lot 1 - Parking Lot 3)									
1	1 Mobilization	LS	1	\$6,369.86	\$6,369.86	\$8,655.00	\$8,655.00	\$10,300.00	\$8,500.00
2	2 Site Preparation	LS	1	\$2,718.18	\$2,718.18	\$1,405.00	\$1,405.00	\$1,000.00	\$500.00
3	3 Parking Lot Earthwork	LS	1	\$39,977.53	\$39,977.53	\$36,670.00	\$36,670.00	\$53,100.00	\$56,550.00
4	4 Excavation Below Subgrade (EBS)	CY	125	\$10.99	\$1,373.75	\$36.45	\$4,556.25	\$45.00	\$5,625.00
5	5 1-1/4" Aggregate Base Course	TON	2530	\$15.49	\$39,189.70	\$13.40	\$33,902.00	\$9.25	\$23,402.50
6	6 Breaker Run	TON	3320	\$15.37	\$51,028.40	\$13.40	\$44,488.00	\$11.85	\$39,342.00
7	7 HMA Binder Course	TON	665	\$76.94	\$51,165.10	\$88.45	\$58,819.25	\$89.33	\$59,404.45
8	8 HMA Surface Course	TON	665	\$69.01	\$45,891.65	\$82.55	\$54,895.75	\$83.38	\$55,447.70
9	9 Grubbing	LS	1	\$964.52	\$964.52	\$540.00	\$540.00	\$1,000.00	\$2,000.00
10	10 Pavement Marking	LS	1	\$872.81	\$872.81	\$920.00	\$920.00	\$930.00	\$920.00
11	11 Geogrid Reinforcement	SY	7600	\$1.67	\$12,692.00	\$1.65	\$12,540.00	\$1.35	\$10,260.00
Total Base Bid Amount (Line Items 1 thru 11)				\$252,243.50	\$252,243.50	\$257,391.25	\$257,391.25	\$259,811.65	\$259,811.65
ALTERNATE BID NO. 1 - Parking Lot 4									
12	A1-1 Mobilization	LS	1	\$2,031.67	\$2,031.67	\$2,300.00	\$2,300.00	\$1,500.00	\$2,500.00
13	A1-2 Site Preparation	LS	1	\$4,264.04	\$4,264.04	\$285.00	\$285.00	\$500.00	\$500.00
14	A1-3 Parking Lot Earthwork	LS	1	\$9,828.11	\$9,828.11	\$10,277.25	\$10,277.25	\$14,500.00	\$15,500.00
15	A1-4 Excavation Below Subgrade (EBS)	CY	50	\$10.93	\$546.50	\$36.45	\$1,822.50	\$45.00	\$2,250.00
16	A1-5 1-1/4" Aggregate Base Course	TON	715	\$16.33	\$11,675.95	\$13.40	\$9,581.00	\$9.25	\$6,613.75
17	A1-6 Breaker Run	TON	935	\$16.22	\$15,165.70	\$13.40	\$12,529.00	\$11.85	\$11,079.75
18	A1-7 HMA Binder Course	TON	185	\$77.62	\$14,359.70	\$87.65	\$16,215.25	\$88.53	\$16,378.05
19	A1-8 HMA Surface Course	TON	185	\$65.18	\$12,058.30	\$84.10	\$15,558.50	\$84.94	\$15,713.90
20	A1-9 Sanitary Manhole Casting	EA	1	\$290.85	\$290.85	\$500.00	\$500.00	\$500.00	\$400.00
21	A1-10 Adjust Existing Sanitary Casting	EA	1	\$290.85	\$290.85	\$650.00	\$650.00	\$350.00	\$300.00
22	A1-11 Manhole Chimney Seal	EA	1	\$290.85	\$290.85	\$575.00	\$575.00	\$500.00	\$300.00
23	A1-12 Grubbing	LS	1	\$964.52	\$964.52	\$295.00	\$295.00	\$200.00	\$1,000.00
24	A1-13 Pavement Marking	LS	1	\$321.64	\$321.64	\$340.00	\$340.00	\$344.00	\$340.00
25	A1-14 Geogrid Reinforcement	SY	2135	\$1.67	\$3,565.45	\$1.65	\$3,522.75	\$1.35	\$2,882.25
Total Alternate Bid No. 1 Amount (Line Items 12-25)				\$75,654.13	\$75,654.13	\$74,451.25	\$74,451.25	\$73,311.70	\$78,029.75
Addendum No. 1 Acknowledged (Yes/No)				Yes	Yes	Yes	Yes	Yes	Yes
Bid Security/Type				5% Bid Bond	5% Bid Bond	5% Bid Bond	5% Bid Bond	5% Bid Bond	5% Bid Bond
Apparent Low Base Bid				***	***	***	***	***	***



ALT. #1 -
Lot 4 -
Tennis Ct.

Base Bid - Lot 1
- Pavilion/
Baseball

GREEN ISLE PARK

Base Bid - Lot 3
- Shelter/
Softball

Base Bid - Lot 2
- Park Shop

EAST RIVER

GREEN ISLE CT

EAST RIVER DR

EAST RIVER DR

GREEN ISLE CT

