



East River Collaborative

A community driven approach to resilience planning

➤ Project updates and next steps

Kayla Wandsnider

East River Resilience Coordinator

The Nature Conservancy

Stakeholder Interviews

29 individuals

(municipal and county officials and staff,
university, state agency and NGO)

- Change in land cover/land use: wetlands, agricultural runoff, increased development
- Flood impacts are not limited to downstream communities
- Policies allow development in floodplain
- Undersized, aging infrastructure
- Cost of infrastructure
- Data needed: downstream development impacts, tributaries
- Desire for community coordination



Community Flood Resilience Assessments

East River Watershed Flood Hazards								
Riverine floodplain flooding	Stream-bank erosion	Ice jams	Ponding	Drainage ditch backups	Flash flooding	Coastal flooding	Storm Sewer	Rising ground water
		High	Moderate	Low-Moderate	Low	NA		

Allouez Flood Hazards

Riverine/flood-plain flooding	Streambank erosion	Coastal flooding	Ponding	Ice jams	Drainage ditch backups	Flash flooding



High
Moderate
Low-moderate
Low

Community Impacts

Impact on Socio-Economics				
Buildings and their contents	Disruptions to individuals' livelihood and prosperity	Displacement, resettlement, and relocation	Loss of trust in local governments officials and staff	Business interruption

Impact on Public Health	
Direct injury or loss of life	Interrupted access to healthcare

Impact on Community Assets	
Contamination of waterways	Parks and recreational trails

Impact on Critical Infrastructure, Facilities, & Services									
Power utilities	Wastewater treatment systems	Roadways and evacuation routes	Emergency flood response	Stormwater facilities and infrastructure	Transport systems (bus, rail, port, bicycle)	Schools and day care centers	Community centers and shelters	Medical facilities and services	Waste and recycling collection services

High	Moderate	Low-Moderate	Low	NA
------	----------	--------------	-----	----

Allouez's Priorities

- **Priority actions to address**

- Streambank stabilization and impacts to waterways
- Raising of lift stations
- Community flood preparedness
- Flooding of the East River Trail

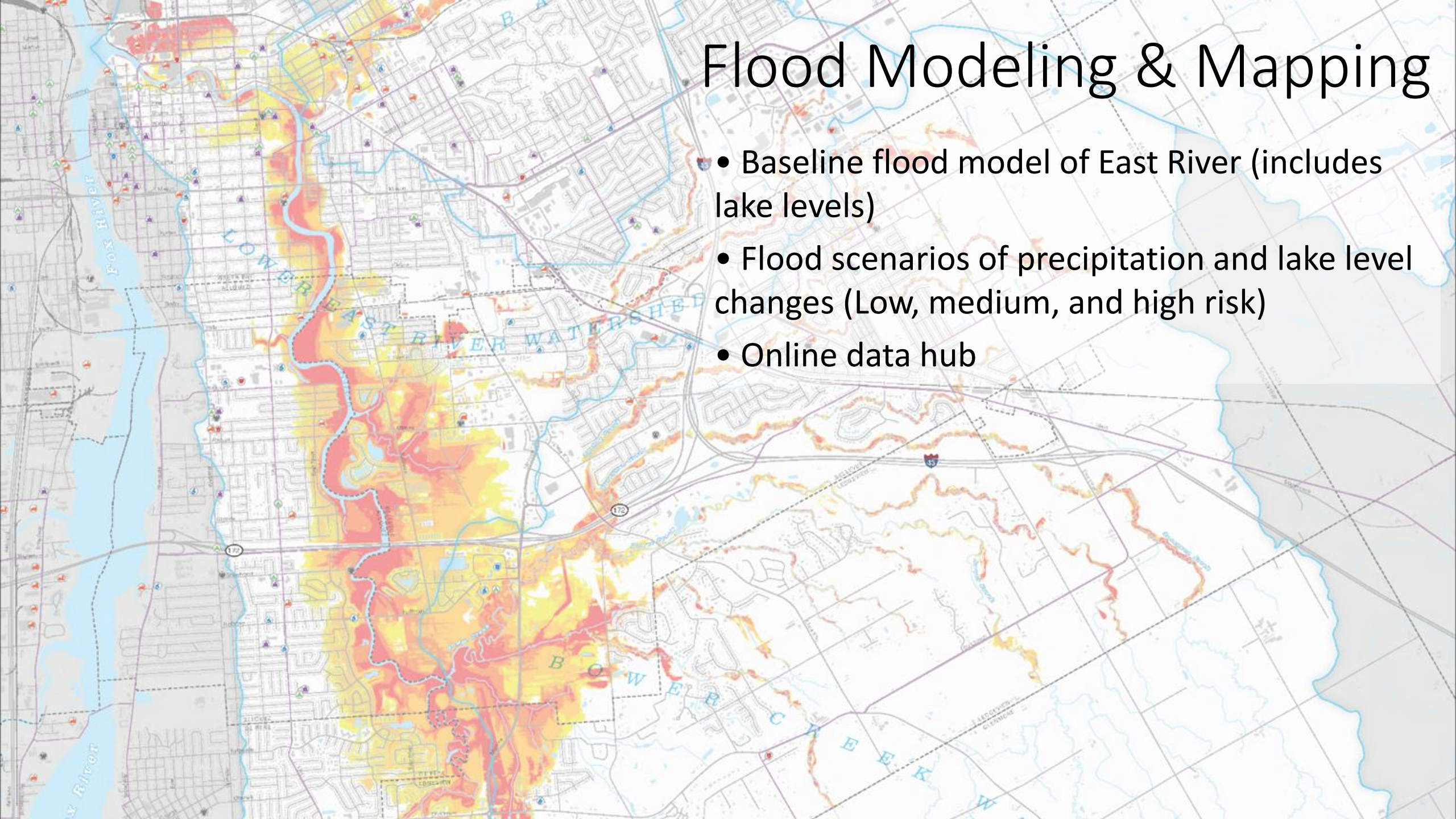
- **Other priorities**

- Ponding in neighborhoods as a nuisance
- Incorporate green infrastructure into future planning efforts
- Map socially vulnerable populations



Flood Modeling & Mapping

- Baseline flood model of East River (includes lake levels)
- Flood scenarios of precipitation and lake level changes (Low, medium, and high risk)
- Online data hub



East River Collaborative

1. Cross-boundary collaboration
2. Building community capacity
3. Data-informed decision-making
4. Inclusion of vulnerable and underrepresented residents
5. Encourage implementation of nature-based solutions



Next Steps

- Cross-boundary communication and coordination
- Mapping and community level planning
- Partnership with US Army Corps of Engineers
- East River Water Trail
- Native plantings





Thank you!

Questions?

Kayla Wandsnider, East River Resilience Coordinator

kayla.wandsnider@tnc.org

414.339.4641

Website:

<https://east-river-resilience-project-tnc.hub.arcgis.com/>