

AGENDA
PUBLIC WORK'S COMMITTEE MEETING
Wednesday, February 14th, 2024
5:30 P.M., Allouez Village Hall

1. CALL TO ORDER/ ROLL CALL
2. MODIFY/ADOPT AGENDA
3. APPROVE MINUTES from the December 13th, 2023 meeting
4. ANNOUNCEMENTS
5. PUBLIC APPEARANCES

OLD BUSINESS:

6. DISCUSSION/ACTION RE: REQUEST TO ADD "NO PARKING" SIGNAGE AT THE EAST LEG OF BAIRD ST. AND MCCORMICK ST. INTERSECTION (from PW 10/11/23) (DPW Gehin)

NEW BUSINESS:

7. DISCUSSION/ACTION RE: PRELIMINARY RESOLUTION TO LEVY STORM LATERAL SPECIAL ASSESSMENTS (DPW Gehin)
8. DISCUSSION/ACTION RE: PURCHASE OF PUBLIC WORKS DEPARTMENT EQUIPMENT (DPW Gehin)
 - a. FRONT END LOADER
 - b. GARBAGE TRUCKS (2)
 - c. SMALL TRACTOR
 - d. WATER DEPT. PICKUP TRUCKS (2)
9. DISCUSSION/ACTION RE: 2024 STREET RESURFACING PROJECT BID RESULTS (DPW Gehin)

DISCUSSION/REPORT:

10. DISCUSSION RE: 2024 SANITARY SEWER CIPP LINING PROJECT BID RESULTS (DPW Gehin)
11. DISCUSSION RE: 2024 LIBAL STREET UTILITY IMPROVEMENT PROJECT BID RESULTS (DPW Gehin)
12. ADJOURNMENT

NOTE: It is possible that members of and a possible quorum of members of other governmental bodies of the municipality may be in attendance at the above noticed meeting to gather information; no action will be taken by any governmental body at the above noticed meeting other than the governmental body specifically referred to above in this notice.

JOINT PUBLIC WORKS / PARKS, RECREATION, & FORESTRY COMMITTEE MEETING Minutes
FOLLOWED BY PUBLIC WORKS COMMITTEE MEETING
Wednesday, December 13th, 2023 at 5:30PM
ALLOUEZ VILLAGE HALL, 1900 LIBAL STREET

Public Works Committee Members Present: Lefebvre, Beyler, Green, Genrich
Also present: Gehin, Lange, and Nick Vande Hey
Excused: Collison

Park Committee Members Present: Kowalzek, Faller, Seidl, Ruohomaki, Atwood
Also present: Clark
Excused: Hallberg, Mathwig

CALL TO ORDER / ROLL CALL

Genrich called the meeting to order at 5:30pm

MODIFY/ADOPT AGENDA

Green/Beyler moved to adopt the agenda as presented. Motion carried.

DISCUSSION/ACTION: RIVERVIEW PARK STORMWATER POND –SEPTEMBER PUBLIC INFORMATIONAL MEETING SUMMARY

Gehin indicated the purpose of tonight's meeting is to review and discuss the following:

- Provide a recap of the September Public Information Meeting (PIM) presentation.
- Summary of the PIM comments received
- Presentation of a 4th Option based on the PIM comments
- Anticipated project schedule

Nick Vande Hey, McMahon Associates, provided an overview of the September PIM presentation. The overview included:

- Review of the Village's overall stormwater plan of action of which included Village delineated sub watersheds and the existing and proposed stormwater best management practices in use and planned for in the future to meet stormwater quality regulations.
- Described the Riverview Pond watershed boundary.
- Reviewed the various components making up a typical wet pond cross section (i.e. permanent pool, safety shelf and planted side slopes).
- A need to increase available vehicle parking for Riverview Park Events.
- Review of Pond Options 1, 2 and 3 along with associated parking lot expansion.
- Riverview pond summary (pond areas, wetland impacts, DNR funding and estimated cost).
- Anticipated project summary.

Gehin –

- Staff received a number of PIM comments of which a majority of favored Option 2 (pond located in northeast corner of the Park Property).
- In addition, majority of those that had commented at the PIM questioned the need for an additional parking lot. Consensus was to keep the two projects (Pond and Parking) separate and to review parking needs when more is learned about the future YMCA project.

- For safety reasons some had questioned the need for fencing. A comment was provided indicating the presence of a high-pressure gas line located along the northside of Broadway Drive. For flooding purposes avoid the filling of and or disturbance of existing wetland areas.

Nick Vande Hey –

- Based on the PIM comments received; the Village prepared a 4th Option with the pond located in the northeast corner of the park property with the parking lot expansion removed. The option includes:
 - o On-Street parking located along the eastside of East River Drive.
 - o Space around the pond for maintenance and for buffer reasons.
 - o An effort to preserve one of the two ballfields.
 - o Pond sized to meet stormwater quality requirements and avoid wetland impacts.

The Department of Natural Resources (DNR) provides the following guidance on the disturbance of wetlands:

- o Avoid all together
- o If you cannot avoid, minimize disturbance to less than 10,000 SF
- o Mitigation required for disturbance greater than 10,000 SF
- o Pond projects with wetland impacts are not eligible for DNR stormwater grant funding.

Discussion:

Clark – Is there the ability to tweak the pond to save a ballfield?

Vande Hey – The north field may be saved. It is possible that another pond may need to be built to meet stormwater quality requirements.

Lefebvre – Have you looked at the elevations of the storm sewer that serves this area?

Gehin – Staff is looking for a joint committee recommendation on a preferred option to move ahead with further refinement of pond layout and for discussion purposes at future meetings.

Faller – Do we have data on usage of the softball fields?

Beyler – Make data available for future meetings.

Beyler/Lefebvre moved to suspend the rules. Motion carried.

Amy Pagel, 3005 Riviera Rue

- Thanked the committees for listening and taking our comments.
- Remove the parking lot cost from the pond project for the two projects should be handled separately.

Gregg Miller, 3016 Riviera Rue

- If two diamonds are gone do you need to add the parking? Play 5 days a week and spread out the parking.

Mary Orcutt, 2544 Meadow Breeze Court

- Lives in Ledgerview and is a member of the Allouez Girls Softball
- We would like parking options as other communities join our league, play games 3-4 nights/week, concession would not be available at other sites.

Kristoffer Engebretson, 336 Terraview Drive

- Member of the Allouez Girls Softball – feels like softball is being left out of the decisions. We have a major parking issue. We use the fields 4 nights a week.

- Show the proof that a pond will decrease property values. Don't touch the wetlands.
- Which option is most cost effective? Should look at option 1.

Kelly Seefeldt, 830 Broadview Drive

- Option 1 is next to her house. Agrees parking is a problem. Walking should not be an issue for softball players because it is not typically no further than two blocks.
- No one is talking about the loss of two soccer fields.

Beyler/Lefebvre moved to pick up the rules. Motion carried.

Beyler/Green moved to recommend to the Village Board Option 4 with an attempt to save the north ballfield and maximize the pond size to meet stormwater regulations. Motion carried.

ADJOURNMENT

Lefebvre/Beyler moved to adjourn the joint meeting at 6:15pm. Motion carried.

Minutes submitted by Brad Lange, Chris Clark and Sean Gehin

PUBLIC WORKS COMMITTEE MEETING Minutes
Wednesday, December 13, 2023
ALLOUEZ VILLAGE HALL, 1900 LIBAL STREET

Present: Green, Beyler, Genrich, Lefebvre
Also present: Gehin, Lange
Excused: Collison

CALL TO ORDER / ROLL CALL

Genrich called the meeting to order at 6:20pm

MODIFY/ADOPT AGENDA

Beyler/Lefebvre moved to adopt the agenda as presented. Motion carried.

APPROVE MINUTES from the October 11th, 2023 meeting

Green/Lefebvre moved to approve the October 11th, 2023 minutes as presented. Motion carried.

ANNOUNCEMENTS

None

PUBLIC APPEARANCES

None

DISCUSSION/ACTION RE: SCADA SYSTEM UPGRADE

Gehin –

- In 2024 the Water Department will be upgrading the existing water distribution and lift station SCADA computer.
- The SCADA system monitors and operates the water distribution and lift station systems limiting the manual operation of the utility systems.
- In general, the upgrade and updating of the SCADA system will include:
 - o Cabinet Enclosure with control panel and surge protection
 - o Ethernet Connection
 - o Allen Bradley PLC
 - o 10" Display with programmed screens
 - o Upgrade of existing SCADA computer and Software
 - o Provide Dell Precision with Windows 11
 - o Furnishing and installation of SCADA Software
 - o Off-Site System Testing
 - o All PLC, HMA and SCADA computer programming
 - o Operator Training
 - o 12 Month Warranty
- The cost of quoted upgrade is \$53,625.

Discussion:

- Beyler – Are there other companies that do this or is there certain software we need.
- Lefebvre – Limited Liability – Review of Meditation/Arbitration language.

Lefebvre/Green moved to recommend to the Village Board approval of the PJ Korten's SCADA System Upgrade in the amount of \$53,625 pending legal review of the contract. Motion carried.

DISCUSSION/ACTION RE: RENEWAL OF CROSS CONNECTION CONTROL INSPECTION SERVICE AGREEMENT

- a. RESIDENTIAL AGREEMENT
- b. COMMERCIAL AGREEMENT

Gehin-

- The WDNR requires all public water systems to maintain an annual Cross-Connection Control (CCC) program involving the inspection of residential and non-residential connections to the safe drinking water supply.
- State plumbing code requires approved backflow prevention methods to be installed at potable water connections. The purpose of the program is to prevent contamination of the public water system.
- HydroCorp (contractor) is currently under contract to provide residential and non-residential CCC inspections of which expire end of this year and March 1st of next year, respectively.
- To be compliant with DNR Administrative Code and to ensure everyone in our community has safe and clean drinking water, the staff has received two separate proposals from HydroCorp to continue the residential and non-residential cross-connection control inspections:
 - o 1-yr Residential CCC Inspection Service Agreement with proposed fee of \$19,344.
 - o 2-yr Non-Residential CCC Inspection Service Agreement with proposed fee of \$14,976.

Discussion:

Lefebvre – Dispute resolution.

Green/Lefebvre moved to recommend to the Village Board to approve the HydroCorp 1- and 2-yr CCC inspection service agreements; 1 year Residential \$19,344 and 2 year Non-Residential \$14,976, contingent upon review by the village attorney. Motion carried.

DISCUSSION/ACTION RE: REQUEST FOR A NO PARKING ZONE ALONG THE EASTSIDE OF LONGVIEW COURT AT DOTY ELEMENTARY SCHOOL

Gehin-

- For safety reasons, the Green Bay Public School District has requested a Limited No Parking Zone located along the eastside of Longview Court on School Days from 7:30 am to 4:30 pm.
- The School District would furnish and install the signs.

Lefebvre/Beyler moved to recommend approval of installing No Parking signs along the east side of Longview Court paid for by the Green Bay Public school district. Motion carried.

DISCUSSION RE: LIBAL STREET REAL ESTATE ACQUISITION – UPDATE

Gehin-

- Of the 89 parcels requiring real estate acquisition, 10 parcels remain unsigned. All ten parcels have been appraised and their 60-day period to respond with a 2nd appraisal expires on Friday December 29.
- All ten owners have until close of business on Friday December 29 to respond with a 2nd appraisal or accept our offer. If property owner does not respond with 2nd appraisal and or accept offer, additional steps will be taken to acquire property.

DISCUSSION RE: UTILITY RATE CASE

- a. STORMWATER UTILITY
- b. SANITARY SEWER UTILITY

Gehin-

- Village staff have begun a rate study for both the Stormwater and Sanitary Sewer Utilities.
- With Village Board approval, staff has recently hired Ruekert-Mielke to provide assistance with the Sanitary Sewer rate case. The Sanitary Sewer rates were last increased beginning of 2022. The primary need for the Sanitary Sewer study is due to:
 - o The rising cost to treat wastewater.
 - o Declining use of water by one of the Village's largest users.
 - o Review of rates to ensure fair and equitable billing of Utility cost.

- The stormwater Equivalent Runoff Rate (ERU) was last increased in 2015. An adjustment to the rate is necessary to keep up with the rising cost to operate and maintain the Village's storm sewer system.

DISCUSSION RE: WDOT LOCAL ROAD IMPROVEMENT PROGRAM FUNDING (LRIP) -SUNRISE LANE

Gehin-

- Every other year the State places funds in the Local Road Improvement Program (LRIP). The 2-yr grant program administered by the County Highway Commissioner, will allow up to 4 projects to be selected and awarded projects to receive a maximum reimbursement of 50% of the eligible project cost.
- Village staff submitted a grant application for the resurfacing of Sunrise Ln from Libal St. to Briar Ln (2100 ft) in October.
- The Village Street resurfacing project was selected to receive LRIP funding in the amount of \$90,000.

DISCUSSION RE: 2023 PASER RATINGS

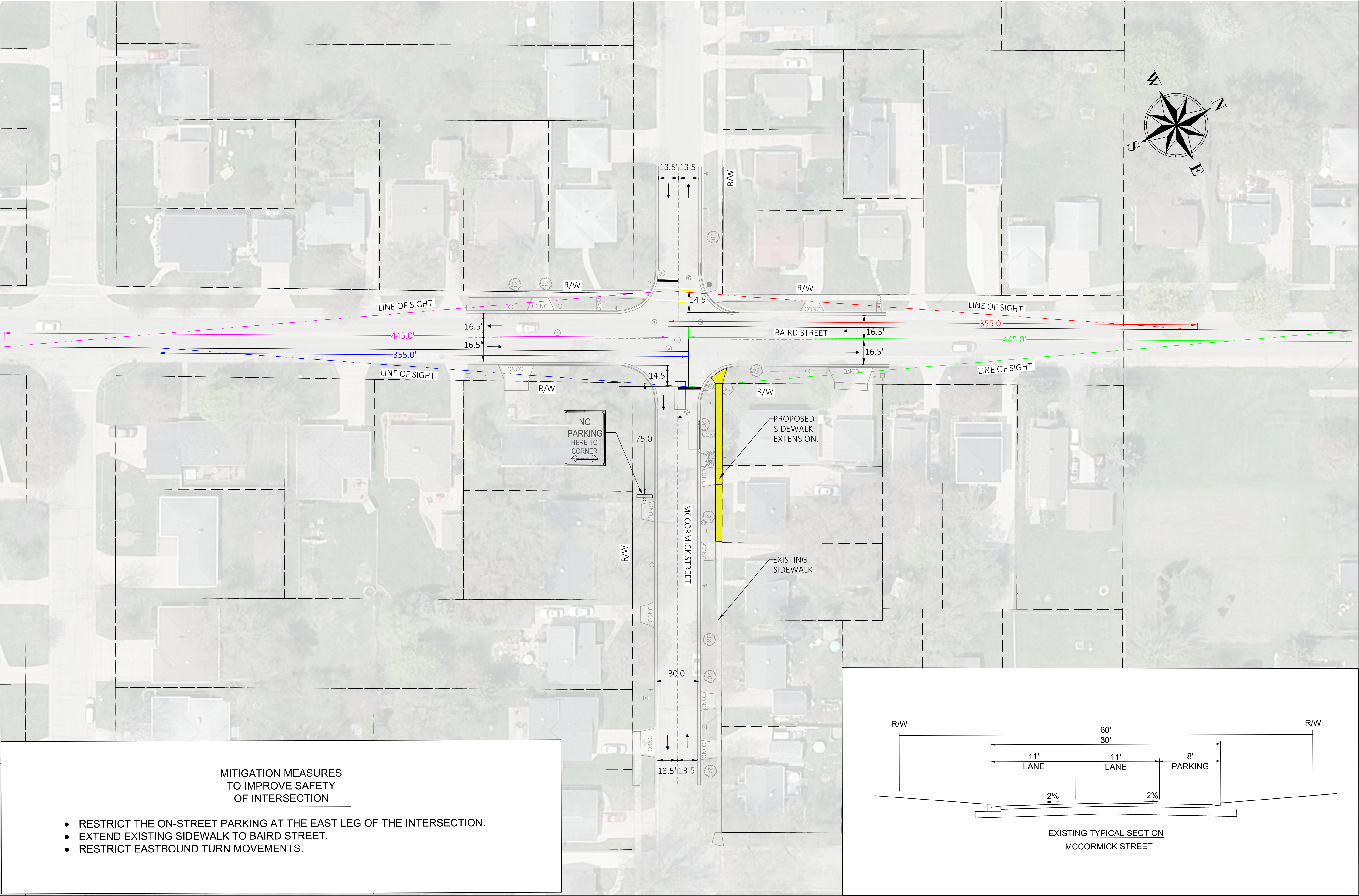
Gehin-

- On an annual basis staff rates the condition of the Village's Street pavement surfaces. Every other year the pavement ratings are reported to the state.
- Graphs were provided describing the overall rating of the Village Streets.
- We are making progress, but a lot more work to be done.




ADJOURNMENT

Lefebvre/Beyler moved to adjourn at 6:54pm. Motion carried.

Minutes submitted by Brad Lange and Sean Gehin



- MITIGATION MEASURES
TO IMPROVE SAFETY
OF INTERSECTION
- RESTRICT THE ON-STREET PARKING AT THE EAST LEG OF THE INTERSECTION.
 - EXTEND EXISTING SIDEWALK TO BAIRD STREET.
 - RESTRICT EASTBOUND TURN MOVEMENTS.

DESCRIPTION	
DATE	
 1900 Libal St. Allouez, WI 54301-2453 PHONE: (920)-446-2800 + FAX: (920)-448-2850 www.villageofallouez.com Copyright © 2015, Village of Allouez	
VILLAGE OF ALLOUEZ TOPO BAIRD & MCCORMICK BAIRD & MCCORMICK INTERSECTION LINE-OF-SIGHT	
 Know what's below. Call before you dig.	
© COPYRIGHT 2024 VILLAGE OF ALLOUEZ	
DATE: 1/15/2024	
SCALE: 1" = 30' PLOT 34X22	
	
DESIGNED BY: SLS & GSF	
CHECKED BY: SJG	
SHEET NUMBER	
1	



VILLAGE OF ALLOUEZ

Allouez Village Hall • 1900 Libal Street • Green Bay, Wisconsin 54301-2453
Phone No.: (920) 448-2800 • Fax No.: (920) 448-2850

Department of Public Works

02/10/2024

2024 STORM LATERAL SPECIAL ASSESSMENTS

This spring the Village of Allouez will be reconstructing Libal Street from STH 172 to Allouez Avenue and resurfacing the street from Allouez Avenue to Kalb Avenue. The reconstruction of Libal Street includes the replacement of existing and installation of new storm laterals.

As a part of the project, any property that currently does not have a storm sewer lateral will be provided one from the storm sewer in the street to the property line. For those properties sharing an existing lateral, a new separate storm lateral will be provided to each property. In accordance with Village Code, the cost to install a new lateral is assessable to the benefited property owner. The replacement of an existing lateral from the main to the street right-of-way (property line) is not an assessable charge. The proposed assessments are being handled consistent with past practice to ensure equity for all property owners.

The estimated cost of the special assessment by address along with payment procedures are provided on the enclosed Engineering Report on Special Assessments. The Final Special Assessment will be computed based on actual project cost and will be mailed after completion of the project, usually in March or April the following year.

A Preliminary Resolution of Intent to Levy Special Assessments is necessary to begin the assessment process. Along with the Village Board adoption of the resolution, the Board will set the date of the Special assessment hearing. Based on the project schedule, staff is recommending that the hearing be held during the Village Board meeting planned for on March 19th, 2024.

Suggested Motion:

A recommendation to the Village Board to adopt the Preliminary Resolution of Intent to Levy Special Assessments and to set a Public Hearing date of March 19th, 2024.

Sean J. Gehin, P.E.
V. of Allouez DPW

VILLAGE OF ALLOUEZ

Allouez Village Hall • 1900 Libal Street • Green Bay, Wisconsin 54301-2453
Phone No.: (920) 448-2800 • Fax No.: (920) 448-2850

Department of Public Works

STORM SEWER LATERAL ASSESSMENTS FOR 2024 LIBAL STREET RECONSTRUCTION PROJECT

Below is an outline for the implementation of the storm lateral special assessments for the 2024 Libal Street Reconstruction project. Per Village Ordinance (Section 350-1) the installation of new laterals is assessable to the benefited properties.

In summary, the process is as follows:

1. The Public Works Department prepares letter to resident, preliminary resolution to levy special assessment, engineering report, and notice of special assessment hearing.
2. On February 14th the Public Works Committee to review and recommend Village Board approval of the preliminary resolution to levy special assessments and discusses possible date for the public hearing (March 19th). Assessment financing to be reviewed by the Finance Personnel AD Hoc Committee.
3. On February 20th the Village Board adopts the preliminary assessment resolution and establishes March 19th for the public hearing.
4. The Public Works Department with help from the Village Clerk mails letter, notice and engineering report to benefited property owners on the February 21st. Engineering Report is placed on file with the Village Clerk.
5. A notice of the special assessment hearing is published by the Village Clerk two weeks before the public hearing. Target date is March 5th.
6. Public Works Department to host an open house meeting on the week of February 26th, tentatively on the 29th of February from 6 to 8 pm in the Village Hall Board Room. Purpose of the meeting is to provide a brief presentation to provide an update on the project scope and schedule, discuss the lateral assessment process, to review the voluntary private side sanitary sewer program and to answer resident questions.
7. On March 19th the Village Board to hold the public hearing and receives resident testimony. After closure of the hearing the Village Board approves the engineering report containing estimated cost of the lateral assessments.
8. At a date to be set after January 1, 2025, the Village Board approves the final resolution which establishes the final cost to be assessed based on final construction costs of the project. The final resolution shall be published as a Class I notice (10 days).
9. Invoices are sent to the residents (usually April 2025). Invoice shall also include cost of private side lateral replacement if applicable.
10. Special assessments are due and payable 30 days from the date of the invoice issued by the Village. If paid within 30 days, no interest shall be added. Not paid within 30 days from the date of the invoice issued by the Village shall automatically be placed on the next five real estate tax bills in equal installments. Interest will be added in the amount of 4% per year on the unpaid balance. The balance may be paid in full at any time with interest calculated through the month of payment.

VILLAGE OF ALLOUEZ

Allouez Village Hall • 1900 Libal Street • Green Bay, Wisconsin 54301-2453
Phone No.: (920) 448-2800 • Fax No.: (920) 448-2853

Department of Public Works

ENGINEERING REPORT ON SPECIAL ASSESSMENTS INSTALLATION OF:

STORM SEWER LATERALS

HEARING DATE:

March 19th, 2024 at 6:30 P.M.

Allouez Village Hall, 1900 Libal Street

This report is submitted in accordance with the requirements of Wisconsin §66.0703, and the preliminary resolution of the governing body of the Village of Allouez, Wisconsin, dated February 20th, 2024, determining the levy of special assessments on benefitted properties for public improvements described in this report.

Purpose of Project:

The purpose of this project is to provide the residents on Libal Street from STH 172 to Allouez Avenue with a dependable lateral to the Village's storm sewer system, in compliance with Village of Allouez Ordinance Chapter 350.

Assessment Area:

Libal Street – STH 172 to Allouez Avenue

Improvements:

Installation of new 6" PVC storm sewer laterals from the main line to the village right-of-way line on the above listed street.

Method of Assessment:

The amount assessed for the storm sewer laterals will be on a per street basis and shall be based on the amount equal to the actual cost per foot of pipe installed from the main to the right-of-way (property line). The total footage of 6-inch pipe installed on a street shall be multiplied by the cost per foot then divided equally by the number of property owners receiving a lateral to the right-of-way line. The actual cost is obtained from the official bid document of the low bidder.

Storm Sewer Lateral Cost Example:

Feet Installed	401
Cost Per Foot	\$80.00
Total Cost of Pipe	\$32,080.00
Total Number of Properties:	12
Cost Per Service	\$2,673.33

Establishment of Storm Sewer Lateral Rate:

The costs generated in this report are based on estimates only. The cost assessed to a property owner may not exceed the estimated amount on the engineers estimate spreadsheet and are anticipated to be lower.

Financing of Assessment:

Payment for such work or improvements shall be due and payable 30 days from the date of the invoice issued by the Village. If paid within 30 days, no interest shall be added. Not paid within 30 days from the date of the invoice issued by the Village shall automatically be placed on the next five real estate tax bills in equal installments. Interest will be added in the amount of 4% per year on the unpaid balance. The balance may be paid in full at any time with interest calculated through the month of payment.

Hearing:

All persons interested, or their representatives, may appear at the Special Assessment Hearing to be held on Tuesday, March 19th, 2024 at 6:30 pm in the Village of Allouez Municipal Building, located at 1900 Libal Street.

2024 ASSESSMENT REPORT
LIBAL STREET -- STORM SEWER LATERALS
V ALLOUEZ -- 4517-06-71
ENGINEERING ESTIMATE

	PROPERTY OWNER	PROPERTY ADDRESS	PARCEL NUMBER	NUMBER OF LATERALS	ESTIMATED ASSESSMENT	MAILING ADDRESS
1	Josh V & Amy K Friberg-Wyckoff	503 Karen Lane	AL-806-T-3	1/2	\$1,336.67	same
2	James F Melotte	2681 Libal Street	AL-806-T-2	1/2	\$1,336.67	same
3	Daniel W Destaercke	2686 Libal Streeet	AL-1651-P-52	1/2	\$1,336.67	same
4	Austin J Kolodzie	2680 Libal Street	AL-1651-P-53	1/2	\$1,336.67	same
5	Rebbecca L Tweedale	2555 Libal Street	AL-806-L-91	1/2	\$1,336.67	same
6	Alyssa M Counard	2551 Libal Street	AL-806-L-89	1/2	\$1,336.67	same
7	Emily Carlton	2535 Libal Street	AL-806-L-83	1/2	\$1,336.67	same
8	James F Neisius	2531 Libal Street	AL-806-L-81	1/2	\$1,336.67	737 Simonet St Green Bay WI 54301
9	Gerald R Sargent	503 Blackhawk Drive	AL-806-L-39	1/2	\$1,336.67	same
10	Patric K Mayer Living Trust	2501 Libal Street	AL-806-L-38	1/2	\$1,336.67	same
11	Maryel L Dubois	2502 Libal Street	AL-1018-4	1/2	\$1,336.67	1609 Twin Lakes Cir Green Bay WI 54311
12	Samuel D & Alissa Larsh	2428 Libal Street	AL-1018-7	1/2	\$1,336.67	same
13	Nicholas G & Nancy B Schlee	2420 Libal Street	AL-1018-6	1/2	\$1,336.67	25777 168th ST NW Big Lake MN 55309
14	Robert J & Theresa Ohlschmidt	2416 Libal Street	AL-1018-5	1/2	\$1,336.67	same
15	John P & Mary K Jacobs	2373 Libal Street	AL-1651-L-2	1/2	\$1,336.67	same
16	Erica Chanel Reid-Dixon	2367 Libal Street	AL-1651-L-1	1/2	\$1,336.67	same
17	Renee N Morrow	2353 Libal Street	AL-1295-12	1	\$2,673.33	same
18	Vineta S Belden	2341 Libal Street	AL-129-10	1/2	\$1,336.67	same
19	Edward M Bowden	2335 Libal Street	AL-1295-9	1/2	\$1,336.67	same
20	Barbel I Betker	2352 Libal Street	AL-1294-2	1	\$2,673.33	same
21	Lauren Kate Noack	2340 Libal Street	AL-1294-5	1/2	\$1,336.67	same
22	Harlan M & Penelope F Dart	2330 Libal Street	AL-1294-8	1/2	\$1,336.67	same
				12	\$32,080.00	

Estimated Assessment Calculations:

ESTIMATED FEET OF 6" STORM LATERALS	ESTIMATED COST PER FOOT	TOTAL	NUMBER OF LATERALS	EST. COST/LATERAL
401	\$80.00	\$32,080	12	\$2,673.33

VILLAGE OF ALLOUEZ

Allouez Village Hall • 1900 Libal Street • Green Bay, Wisconsin 54301-2453
Phone No.: (920) 448-2800 • Fax No.: (920) 448-2853

Department of Public Works SPECIAL ASSESSMENT NOTICE

February 21st, 2024

Beginning this spring the Village of Allouez will be reconstructing Libal Street from STH 172 to Allouez Avenue and resurfacing the street from Allouez Avenue to Kalb Avenue. The reconstruction of Libal Street includes the replacement of existing and installation of new storm laterals.

If you are a recipient of this letter, your property will be special assessed for the installation of a new storm sewer lateral.

As a part of the project, any property that currently does not have a storm sewer lateral will be provided one to the property line. For those properties sharing an existing lateral, a new separate storm lateral will be provided to each property. In accordance with Village Code, the cost to install a new lateral is assessable to the benefited property owner. The replacement of existing laterals from the main to the street right-of-way (property line) are not an assessable charge. The proposed assessments are being handled consistent with past practice to ensure equity for all property owners.

The estimated cost of the special assessment by address along with payment procedures are provided on the enclosed Engineering Report on Special Assessments. Special assessment bills are computed and mailed after completion of the project, usually in March or April the following year.

A special assessment hearing will be held before the Allouez Village Board on March 19th, 2024 at 6:30p.m. located at Allouez Village Hall, 1900 Libal Street.

Enclosed is a copy of the Engineering Report and Notice of the Hearing. If you have any questions, please feel free to call or email Jeff Piette, Engineering Technician at 920-448-2809, jeff.piette@villageofallouezwi.gov or my contact information can be found below.

Sincerely,



Sean Gehin, P.E.

Director of Public Works

Village of Allouez

Ph. 920-448-2802

Email: sean.gehin@villageofallouezwi.gov

NOTICE OF SPECIAL ASSESSMENT HEARING

WHEREAS the Village Board of Allouez, Brown County, Wisconsin has adopted a resolution that certain improvements be carried out in the following Assessment Area and as provided in the Village of Allouez Libal Street Improvement Project.

Proposed Improvements:

Storm Sewer Laterals

Assessment Area:

Libal Street – STH 172 to Allouez Avenue

THAT special assessments be levied against the appropriate property owners in the Assessment Area and per the Assessment Report.

THAT the Village's Public Works Director has made and filed with the Village Clerk-Treasurer a report complying with the requirements of Wisconsin §66.0703. Said report includes an estimate of the cost of the proposed improvements and an assessment schedule, and any other information relative to the project plans and specifications.

NOTICE IS HEREBY GIVEN that the reports on file in the Clerk-Treasurer's office may be inspected during regular office hours, Monday through Thursday from 7:00 a.m. to 4:30 p.m., and Friday from 7:00 a.m. to 11:00 a.m., at the Allouez Village Hall, 1900 Libal Street, Green Bay, Wisconsin.

NOTICE IS FURTHER GIVEN that the Village Board will hold a public hearing concerning the matters contained in the preliminary resolution, 2024-02 and the report on:

TUESDAY, MARCH 19th, 2024
6:30 P.M.
ALLOUEZ VILLAGE HALL (1900 Libal St.)

All persons interested, or their representatives, may appear at the hearing and be heard.

Dated this 5th day of March, 2024

Carrie Zittlow

Village of Allouez Clerk-Treasurer

Publish March 5th, 2024 (Affidavit Requested)

**PRELIMINARY RESOLUTION OF INTENT
TO LEVY SPECIAL ASSESSMENTS**

RESOLUTION 2024-02

BE IT RESOLVED by the Village Board of Allouez, Brown County, Wisconsin:

THAT it intends to perform the following municipal work or improvements:

STORM SEWER LATERAL INSTALLATION

in the following assessment district:

Libal Street – STH 172 to Allouez Avenue

 X Under general taxation powers, and special assessment shall not exceed the benefits to the property.

 Under police powers, and special assessments shall be determined by the Village Board.

The number of installment payments in which the special assessments may be paid shall be determined at the hearing to be held concerning the matters contained in this resolution and the following report.

THAT the Village's Public Work's Director shall prepare the report required by Wisconsin Statute 66.0703, and file the same with the Village Clerk-Treasurer.

PASSED AND ADOPTED by the Village Board on the 20th day of February, 2024.

James F. Rafter, Village President

ATTEST:

Carrie Zittlow, Village Clerk-Treasurer

VILLAGE OF ALLOUEZ

Allouez Village Hall • 1900 Libal Street • Green Bay, Wisconsin 54301-2453
Phone No.: (920) 448-2800 • Fax No.: (920) 448-2850

Department of Public Works

February 14, 2024

2024 Labrie Garbage Truck

The Street Dept. is looking to upgrade 2 of their Labrie garbage trucks this year. Our current trucks utilize a Peterbilt 320 chassis with a labrie body which we have had minimal problems with.

The Villages equipment fund has these trucks being replaced after 8 years of use. Our current trucks are 10 years old. The equipment replacement fund had estimated that a new truck would cost 350,000 at the time of replacement. The quote that was given to us is higher due to the price increases. We started getting quotes back in 2022 and due to supply chain problems we are still on a waiting list to receive the 2 chassis. We are hoping that we will be able to receive them in the 3rd quarter of this year. As of today we are estimating that the price will be 365,000 per unit.

Below are the current numbers that were given to us. These numbers could go up do to price increases. The dealer will notify us when a chassis becomes available with their current market price and we will have two business days to reach a agreement on that price otherwise we will forfeit our spot on the list.

Peterbilt 520 Garbage Truck

520 chassis	197,178
Labrie body	<u>164,310</u>
Villages price	361,488

VILLAGE OF ALLOUEZ

Allouez Village Hall • 1900 Libal Street • Green Bay, Wisconsin 54301-2453
Phone No.: (920) 448-2800 • Fax No.: (920) 448-2850

Department of Public Works

February 14, 2024

2024 Street Dept. L90H Wheel Loader

The Street Dept. is looking to upgrade one of their front-end loaders this year. The machine would be capable of utilizing our current attachments such as our grabble bucket, set of forks, and our snow blade. The loader would be used for many tasks that are needed throughout the Village such as brush collection, refuse collection, spring/fall clean-up, cleaning of the Lebrun drop off site, loading water break material, snow removal, asphalt repairs etc.

The Villages equipment fund has this loader being replaced after 10 years. The loader that it will be replacing is 13 years old. The equipment replacement fund had estimated that a new loader would cost \$250,000 at the time of replacement. The 2 quotes that were received came in at a lower price.

I have attached a Sourcewell price and a price through our local dealer. The local dealer for this piece of equipment can give us a more competitive price at this time. Through Sourcewell the suppliers are locked in a contract for a set amount of time and must anticipate all price increases at the beginning of their contract. Our local dealer does not have to anticipate those increases and can give us the current market price of the loader. We feel that the trade in value we would get for our current loader is an appropriate price for the condition it is in.

Sourcewell

Volvo L90H wheel loader

Villages price	229,054
Trade in	<u>-42,000</u>
Total	187,054

Aring

Volvo L90H wheel loader

Villages price	225,763
Trade in	<u>-42,000</u>
Total	183,763

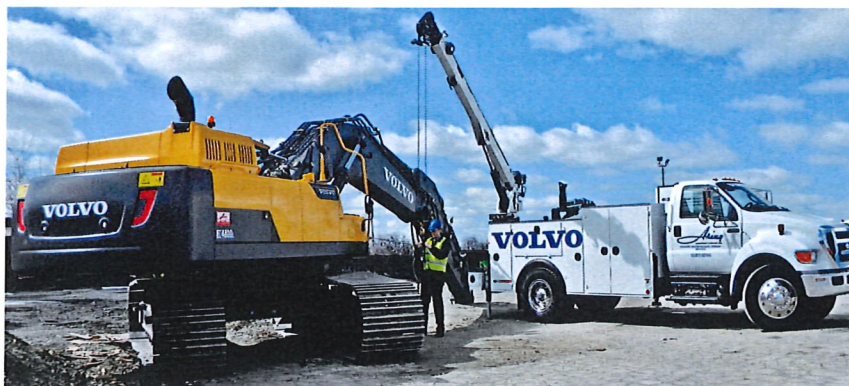
www.aringequipment.com

Butler, WI
13001 W Silver Spring Dr
Butler, WI 53007
262-781-3770

De Pere, WI
1800 N. Ashland Ave.
De Pere, WI 54115
920-336-3601

De Forest, WI
5005 Cake Parkway
De Forest, WI 53532
608-846-9600

Eau Claire, WI
2727 Alpine Rd
Eau Claire, WI 54703
715-835-6133



ALSO FEATURING:



Prepared For:

VILLAGE OF ALLOUEZ
1900 LIBAL STREET
GREEN BAY, WI, 54301

Quote

Quote No.	Q3145
Date	Jan 9, 2024
Valid Till	
Salesman	Scott Shield

Product Details	Unit Price	Quantity	Total
L90H WHEEL LOADER with Snow Plus tires	\$ 225,763.00	1	\$ 225,763.00
TRADE IN L90F	\$ -42,000.00	1	\$ -42,000.00
Sub Total			\$ 183,763.00
Sales Tax			\$ 0.00
F.E.T. Tax (If applicable)			
Grand Total			\$ 183,763.00

Terms & Conditions:

Notes:

VILLAGE OF ALLOUEZ

Allouez Village Hall • 1900 Libal Street • Green Bay, Wisconsin 54301-2453
Phone No.: (920) 448-2800 • Fax No.: (920) 448-2850

Department of Public Works

February 14, 2024

2024 Trackless MT7

The Street Dept. is looking to upgrade one of their municipal tractors this year. The machine would primarily be used for the clearing of snow from public sidewalk and at public corners (i.e. curb ramps). The street dept. will also be utilizing it for the cutting of weeds/grass at the Lebrun Yard and for spring/fall clean-up. This piece of equipment would be compatible with our current attachments (snowblower, sweeper, snow blade, flail mower) as it uses the same coupling system as our other MT7.

The Villages equipment fund has this machine being replaced after 15 years of use. Our current machine is 18 years old. The equipment replacement fund had estimated that a new municipal tractor would cost 183,000 at the time of replacement. The quote that was given to us by our local dealer who also has the contract through sourcewell came in at a lower price then we estimated.

Attached is the price of a new MT7 trackless that was quoted through sourcewell. The quote also includes a new 5' angle plow. Our current angle blade was purchased 23 years ago. In its current condition, it is our opinion that it needs to be replaced.

Macqueen Equipment (sourcewell)

2024 Trackless MT7 Municipal Tractor

Villages price	159,890
5' Angle Plow	<u>+ 6,319</u>
Total	166,209



MACQUEEN
EQUIPMENT



MACQUEEN
EMERGENCY

MacQueen Equipment
N60 W15835 Kohler Lane
Menomonee Falls, WI 53051
262-252-4744 • 800-252-4799

Ship To: VILLAGE OF ALLOUEZ
1900 LIBAL STREET
ALLOUEZ WI 54301

Invoice To: VILLAGE OF ALLOUEZ
1900 Libal St
Allouez WI 54301

Branch 02 - MENOM FALLS WI		
Date 02/01/2024	Time 11:59:27 (O)	Page 1
Account No ALLOU001	Phone No 9204482800	Est No 09 Q01077
Ship Via		Purchase Order TRACKLESS
Tax ID No		
GRANT WEGNER		Salesperson 173

EQUIPMENT ESTIMATE - NOT AN INVOICE

Description ** Q U O T E ** EXPIRY DATE: 02/29/2024 Amount

NEW 2024 TRACKLESS MT7 MUNICIPLE TRACTOR 159890.00

STANDARD EQUIPMENT INCLUDES-----

- John Deere 4045 T4 Final Engine - 74hp
- Liquid Cooled
- Front PTO - 1-3/8 6splines, 540rpm
- Sauer Danfoss Transmission
- Two Speed Mechanical Transmission
- 4WD
- Dana 60 Axles
- 7000lb Axles Capacity
- Hydraulic Brakes
- Remote Access WIFI Diagnostics
- Tilt Steering Wheel
- 8' Turning Radius
- Auto Safety Shutdown
- Digital Dash: Tach w/hr Meter, Water Temp, Oil Pressure, Voltage, Hydraulic Oil Temp, Fuel Gauge
- ROPS J1040-C SAE Cab
- Air Ride 4-Way Seat
- Climate Control - AC/Heat - True HVAC
- Intermittent Front Wiper and Washer
- Rear Wiper and Washer
- Reversing Engine Fan
- 1yr Parts and Labor Warranty Standard

OPTIONAL EQUIPMENT INCLUDES-----

- Front Diff Lock
- Ride Control
- On-Board Wifi Diagnostics

Sale # 01 Subtotal: 159890.00
Total: 159890.00

NEW TRACKLESS 5' ANGLE PLOW 6319.00

VisitUsOnline
www.macqueengroup.com



MACQUEEN
EQUIPMENT



MACQUEEN
EMERGENCY

MacQueen Equipment
N60 W15835 Kohler Lane
Menomonee Falls, WI 53051
262-252-4744 • 800-252-4799

Ship To: VILLAGE OF ALLOUEZ
1900 LIBAL STREET
ALLOUEZ WI 54301

Invoice To: VILLAGE OF ALLOUEZ
1900 Libal St
Allouez WI 54301

Branch 02 - MENOM FALLS WI		
Date 02/01/2024	Time 11:59:27 (O)	Page 2
Account No ALLOU001	Phone No 9204482800	Est No 09 Q01077
Ship Via		Purchase Order TRACKLESS
Tax ID No		
GRANT WEGNER		Salesperson 173

EQUIPMENT ESTIMATE - NOT AN INVOICE

Description ** Q U O T E ** EXPIRY DATE: 02/29/2024 Amount

- Includes Attach Kit

Sale # 02 Subtotal: 6319.00
Total: 6319.00

Subtotal: 166209.00

Authorization: _____

Quote Total: 166209.00

QUOTED PRICES ARE BASED ON CURRENT COSTS AND THEREFORE SUBJECT TO CHANGE
WITH WRITTEN NOTICE TO ACCOUNT FOR PRICING CHANGES BEYOND SELLER'S CONTROL

PRICING PER SOURCEWELL CONTRACT 093021-ELG
VILLAGE OF ALLOUEZ SOURCEWELL #42334
PRICE INCLUDES - FREIGHT, PDI, DELIVERY AND OPERATOR
TRAINING

THANK YOU FOR THE OPPORTUNITY TO QUOTE!
GRANT WEGNER - TERRITORY MANAGER
MACQUEEN EQUIPMENT - WI
920-327-9777 | grant.wegner@macqueengroup.com

VILLAGE OF ALLOUEZ

Allouez Village Hall • 1900 Libal Street • Green Bay, Wisconsin 54301-2453
Phone No.: (920) 448-2800 • Fax No.: (920) 448-2850

Department of Public Works

February 14, 2024

2024 Water Utility Truck Purchase

The Water utility Dept. is looking to upgrade 2 of their pick-up trucks. One will be a Ford F-150 and the other will be a F-250. Some of the tools and equipment that the F-150 will be carrying include locating devices, valve keys, valve wrenches, shovels, paints, hydrant tools, misc. repair parts and safety roadside equipment such as cones and barricades. The F-250 will also be carrying the same tools and equipment along with being retrofitted with a plow to keep the lift stations cleared of snow. In addition to the lift stations it will also be used to make sure fire hydrants are clear and visible during the winter months.

The Village's equipment plan has both these trucks being replaced as the current F-150 is 11 years old and the F-250 is 15 years old. The F-150 will be repurposed to the street dept. It will replace their current truck that has 20 years of use on it. The F-250 is a 15 year old truck and will also be repurposed. It will replace the water dept. valve turning vehicle. The current valve turning truck they are using is 27 years old.

It is the opinion of staff that a full-size truck with an extended cab will best suit their needs. They will be equipped with a tool box in the bed of the truck to keep their tools out of the weather. They will also have a sprayed in bed liner to protect the truck beds and to keep the tools from sliding around. They also feel that an extended cab is needed to keep more sensitive equipment like maps, plans and computers out of the elements.

2024 Water Dept. F-150

Ewald Automotive Group (Vendornet)

2024 Ford F-150 XL 4WD Supercab 6'5" box
MSRP \$48,899
Village of Allouez price \$43,340

Dorsch Ford (Local Dealer)

2024 Ford F-150 XL 4WD Supercab 6'5" box
MSRP \$48,765
Village of Allouez price \$47,075

National Auto Fleet Group (Sourcewell)

2024 Ford F-150 XL 4WD Supercab 6'5" box
MSRP \$48,765
Village of Allouez price \$47,401.52

Accessories

\$625 line X bed liner

2024 Water Dept. F-250

Ewald Automotive Group (Vendornet)

2024 Ford F-250 Supercab 8' box
MSRP \$53,899
Village of Allouez price \$48,745

Dorsch Ford (Local Dealer)

2024 Ford F-250 Supercab 8' box
MSRP \$53,410
Village of Allouez price \$52,688

National Auto Fleet Group (Sourcewell)

2024 Ford F-250 Supercab 8' box
MSRP \$53,775
Village of Allouez price \$51,805.68

Accessories

\$2500 truck side set up for plow
\$775 line X bed liner



Ewald Automotive Group

Scott Kussow | 262-567-5555 | skfleet@ewaldauto.com

Village of Allouez

Prepared For: Darrel Heuser

920-639-2208

darrel.heuser@villageofallouezwi.gov

Vehicle: [Fleet] 2024 Ford F-150 (X1L) XL 4WD SuperCab 6.5' Box





Vehicle: [Fleet] 2024 Ford F-150 (X1L) XL 4WD SuperCab 6.5' Box (Complete)

Quote Worksheet

		MSRP
Base Price		\$44,980.00
Dest Charge		\$1,995.00
Total Options		\$1,914.00
Subtotal		\$48,889.00
Subtotal Pre-Tax Adjustments		\$0.00
Less Customer Discount		(\$5,549.00)
Subtotal Discount		(\$5,549.00)
Trade-In		\$0.00
Subtotal Trade-In		\$0.00
Taxable Price		\$43,340.00
Sales Tax		\$0.00
Subtotal Taxes		\$0.00
Subtotal Post-Tax Adjustments		\$0.00
Total Sales Price		\$43,340.00

Comments:

2024 Ford F150 SuperCab 4wd to your specs as detailed. Registration fees are not included. Delivery can not be anticipated due to current market conditions.

Dealer Signature / Date

Customer Signature / Date



Vehicle: [Fleet] 2024 Ford F-150 (X1L) XL 4WD SuperCab 6.5' Box (Complete)

Standard Equipment

Mechanical

- Engine: 2.7L V6 EcoBoost -inc: auto start-stop technology (STD)
- Transmission: Electronic 10-Speed Automatic -inc: SelectShift w/progressive range select and selectable drive modes: normal, ECO, sport, tow/haul, slippery, deep snow/sand and mud/rut (STD)
- 3.55 Axle Ratio (STD)
- 50 State Emissions System
- Electronic Transfer Case
- Part-Time Four-Wheel Drive
- 70-Amp/Hr 610CCA Maintenance-Free Battery w/Run Down Protection
- 200 Amp Alternator
- Class IV Towing Equipment -inc: Hitch and Trailer Sway Control
- Trailer Wiring Harness
- 1725# Maximum Payload
- GVWR: 6,500 lbs Payload Package
- HD Shock Absorbers
- Front Anti-Roll Bar
- Electric Power-Assist Steering
- Single Stainless Steel Exhaust
- 36 Gal. Fuel Tank
- Auto Locking Hubs
- Double Wishbone Front Suspension w/Coil Springs
- Solid Axle Rear Suspension w/Leaf Springs
- 4-Wheel Disc Brakes w/4-Wheel ABS, Front And Rear Vented Discs, Brake Assist, Hill Hold Control and Electric Parking Brake

Exterior

- Wheels: 17" Silver Steel (STD)
- Tires: 265/70R17 BSW A/T (STD)
- Regular Box Style
- Steel Spare Wheel
- Full-Size Spare Tire Stored Underbody w/Crankdown
- Clearcoat Paint

This document contains information considered Confidential between GM and its Clients uniquely. The information provided is not intended for public disclosure. Prices, specifications, and availability are subject to change without notice, and do not include certain fees, taxes and charges that may be required by law or vary by manufacturer or region. Performance figures are guidelines only, and actual performance may vary. Photos may not represent actual vehicles or exact configurations. Content based on report preparer's input is subject to the accuracy of the input provided.
Data Version: 21610. Data Updated: Jan 30, 2024 6:47:00 PM PST.



Vehicle: [Fleet] 2024 Ford F-150 (X1L) XL 4WD SuperCab 6.5' Box ( Complete)

Exterior

- Black Rear Step Bumper
- Black Front Bumper w/Black Rub Strip/Fascia Accent and 2 Tow Hooks
- Black Side Windows Trim
- Black Door Handles
- Black Power Heated Side Mirrors w/Manual Folding
- Fixed Rear Window
- Light Tinted Glass
- Variable Intermittent Wipers
- Aluminum Panels
- Black Grille
- Tailgate Rear Cargo Access
- Reverse Opening Rear Doors
- Tailgate/Rear Door Lock Included w/Power Door Locks
- Integrated Storage
- Ford Co-Pilot360 - Autolamp Auto On/Off Aero-Composite Led Low/High Beam Auto High-Beam Daytime Running Lights Preference Setting Headlamps w/Delay-Off
- Cargo Lamp w/High Mount Stop Light
- Perimeter/Approach Lights
- Headlights-Automatic Highbeams

Entertainment

- Radio w/Seek-Scan, Clock, Speed Compensated Volume Control and Radio Data System
- Radio: AM/FM SiriusXM w/360L -inc: 6 speakers and auxiliary audio input jack
- Fixed Antenna

Interior

- Cloth 40/20/40 Front Seat -inc: 2-way manual driver/passenger and armrest
- Driver Seat
- Passenger Seat
- 60-40 Folding Split-Bench Front Facing Fold-Up Cushion Rear Seat
- Manual Tilt/Telescoping Steering Column
- Gauges -inc: Speedometer, Odometer, Voltmeter, Oil Pressure, Engine Coolant Temp, Tachometer, Transmission Fluid Temp, Trip Odometer and Trip Computer

This document contains information considered Confidential between GM and its Clients uniquely. The information provided is not intended for public disclosure. Prices, specifications, and availability are subject to change without notice, and do not include certain fees, taxes and charges that may be required by law or vary by manufacturer or region. Performance figures are guidelines only, and actual performance may vary. Photos may not represent actual vehicles or exact configurations. Content based on report preparer's input is subject to the accuracy of the input provided.
Data Version: 21610. Data Updated: Jan 30, 2024 6:47:00 PM PST.



Vehicle: [Fleet] 2024 Ford F-150 (X1L) XL 4WD SuperCab 6.5' Box ( Complete)

Interior	
	Power Rear Windows
	FordPass Connect 5G Mobile Hotspot Internet Access
	Front Cupholder
	Rear Cupholder
	Compass
	Remote Keyless Entry w/Integrated Key Transmitter, Illuminated Entry and Panic Button
	Cruise Control w/Steering Wheel Controls
	Manual Air Conditioning
	HVAC -inc: Underseat Ducts
	Locking Glove Box
	Interior Trim -inc: Cabback Insulator and Chrome Interior Accents
	Full Cloth Headliner
	Urethane Gear Shifter Material
	Day-Night Rearview Mirror
	Passenger Visor Vanity Mirror
	Mini Overhead Console w/Storage and 1 12V DC Power Outlet
	Front Map Lights
	Fade-To-Off Interior Lighting
	Full Vinyl/Rubber Floor Covering
	Pickup Cargo Box Lights
	Smart Device Remote Engine Start
	Connected Navigation Integrated Navigation System w/Voice Activation
	SYNC 4 w/Enhanced Voice Recognition -inc: 12" LCD capacitive touchscreen w/swipe capability, wireless phone connection, cloud connected, AppLink w/App catalog, 911 Assist, Apple CarPlay and Android Auto compatibility, digital owners manual, conversational voice command recognition and connected navigation, Note: Navigation services require SYNC4 and FordPass Connect (optional on select vehicles), Eligible vehicles receive a complimentary 1-year trial of navigation services that begins on the new vehicle warranty start date, Customers must unlock the navigation service trial by activating the eligible vehicle w/a FordPass member account, If not subscribed by the end of the complimentary period, the connected navigation service will terminate, and the system will revert to embedded offline navigation, Connected service and features depend on compatible AT&T network availability, Evolving technology/cellular networks/vehicle capability may limit functionality and prevent operation of connected features, FordPass App, compatible w/select smartphone platforms, is available via a download, Message and data rates may apply
	Instrument Panel Bin, Dashboard Storage, Interior Concealed Storage, Driver / Passenger And Rear Door Bins
	Power 1st Row Windows w/Driver And Passenger 1-Touch Up/Down

This document contains information considered Confidential between GM and its Clients uniquely. The information provided is not intended for public disclosure. Prices, specifications, and availability are subject to change without notice, and do not include certain fees, taxes and charges that may be required by law or vary by manufacturer or region. Performance figures are guidelines only, and actual performance may vary. Photos may not represent actual vehicles or exact configurations. Content based on report preparer's input is subject to the accuracy of the input provided.
Data Version: 21610. Data Updated: Jan 30, 2024 6:47:00 PM PST.



Vehicle: [Fleet] 2024 Ford F-150 (X1L) XL 4WD SuperCab 6.5' Box ( Complete)

Interior

- Power Door Locks w/Autolock Feature
- Redundant Digital Speedometer
- Trip Computer
- Outside Temp Gauge
- Digital/Analog Appearance
- Seats w/Cloth Back Material
- Manual Adjustable Front Head Restraints and Manual Adjustable Rear Head Restraints
- Perimeter Alarm
- Securilock Anti-Theft Ignition (pats) Immobilizer
- 1 12V DC Power Outlet
- Air Filtration

Safety-Mechanical

- AdvanceTrac w/Roll Stability Control Electronic Stability Control (ESC) And Roll Stability Control (RSC)
- ABS And Driveline Traction Control

Safety-Exterior

- Side Impact Beams

Safety-Interior

- Dual Stage Driver And Passenger Seat-Mounted Side Airbags
- Reverse Sensing System Rear Parking Sensors
- BLIS (Blind Spot Information System) Blind Spot
- Pre-Collision Assist with Automatic Emergency Braking (AEB)
- Lane Keeping Alert Lane Keeping Assist
- Lane Keeping Alert Lane Departure Warning
- Collision Mitigation-Front
- Driver Monitoring-Alert
- Collision Mitigation-Rear
- Tire Specific Low Tire Pressure Warning
- Dual Stage Driver And Passenger Front Airbags
- Airbag Occupancy Sensor
- Safety Canopy System Curtain 1st And 2nd Row Airbags
- Outboard Front Lap And Shoulder Safety Belts -inc: Rear Center 3 Point, Height Adjusters and Pretensioners

This document contains information considered Confidential between GM and its Clients uniquely. The information provided is not intended for public disclosure. Prices, specifications, and availability are subject to change without notice, and do not include certain fees, taxes and charges that may be required by law or vary by manufacturer or region. Performance figures are guidelines only, and actual performance may vary. Photos may not represent actual vehicles or exact configurations. Content based on report preparer's input is subject to the accuracy of the input provided.
Data Version: 21610. Data Updated: Jan 30, 2024 6:47:00 PM PST.



Vehicle: [Fleet] 2024 Ford F-150 (X1L) XL 4WD SuperCab 6.5' Box ( Complete)

Safety-Interior

Ford Co-Pilot360 - Reverse Camera Back-Up Camera

WARRANTY

Basic Years: 3
Basic Miles/km: 36,000
Drivetrain Years: 5
Drivetrain Miles/km: 60,000
Corrosion Years: 5
Corrosion Miles/km: Unlimited
Roadside Assistance Years: 5
Roadside Assistance Miles/km: 60,000

This document contains information considered Confidential between GM and its Clients uniquely. The information provided is not intended for public disclosure. Prices, specifications, and availability are subject to change without notice, and do not include certain fees, taxes and charges that may be required by law or vary by manufacturer or region. Performance figures are guidelines only, and actual performance may vary. Photos may not represent actual vehicles or exact configurations. Content based on report preparer's input is subject to the accuracy of the input provided.
Data Version: 21610. Data Updated: Jan 30, 2024 6:47:00 PM PST.



Ewald Automotive Group

Scott Kussow | 262-567-5555 | skfleet@ewaldauto.com

Village of Allouez

Prepared For: Darrel Heuser

920-639-2208

darrel.heuser@villageofallouezwi.gov

Vehicle: [Fleet] 2024 Ford Super Duty F-250 SRW (X2B) XL 4WD SuperCab 8' Box





Vehicle: [Fleet] 2024 Ford Super Duty F-250 SRW (X2B) XL 4WD SuperCab 8' Box (Complete)

Quote Worksheet

	MSRP
Base Price	\$50,305.00
Dest Charge	\$1,995.00
Total Options	\$1,599.00
Subtotal	\$53,899.00
Subtotal Pre-Tax Adjustments	\$0.00
Less Customer Discount	(\$5,154.00)
Subtotal Discount	(\$5,154.00)
Trade-In	\$0.00
Subtotal Trade-In	\$0.00
Taxable Price	\$48,745.00
Sales Tax	\$0.00
Subtotal Taxes	\$0.00
Subtotal Post-Tax Adjustments	\$0.00
Total Sales Price	\$48,745.00

Comments:

2024 Ford F250 SuperCab 4wd 8' Box to your specs as detailed. Registration fees are not included. Delivery can not be anticipated due to current market conditions.

Dealer Signature / Date

Customer Signature / Date



Vehicle: [Fleet] 2024 Ford Super Duty F-250 SRW (X2B) XL 4WD SuperCab 8' Box ( Complete)

Standard Equipment

Mechanical	
	Engine: 6.8L 2V DEVCT NA PFI V8 Gas -inc: Flex fuel (STD)
	Transmission: TorqShift-G 10-Speed Automatic -inc: SelectShift and selectable drive modes: normal, eco, slippery roads, tow/haul and off-road (STD)
	3.73 Axle Ratio (STD)
	GVWR: 10,000 lb Payload Package
	50-State Emissions System
	Transmission w/Oil Cooler
	Electronic Transfer Case
	Part-Time Four-Wheel Drive
	78-Amp/Hr 750CCA Maintenance-Free Battery w/Run Down Protection
	160 Amp Alternator
	Class V Towing Equipment -inc: Hitch, Brake Controller and Trailer Sway Control
	Trailer Wiring Harness
	3457# Maximum Payload
	HD Shock Absorbers
	Front Anti-Roll Bar
	Firm Suspension
	Hydraulic Power-Assist Steering
	34 Gal. Fuel Tank
	Single Stainless Steel Exhaust
	Auto Locking Hubs
	Front Suspension w/Coil Springs
	Solid Axle Rear Suspension w/Leaf Springs
	4-Wheel Disc Brakes w/4-Wheel ABS, Front And Rear Vented Discs, Brake Assist and Hill Hold Control
Exterior	
	Wheels: 17" Argent Painted Steel -inc: painted hub covers/center ornaments (STD)
	Tires: LT245/75Rx17E BSW A/S -inc: Spare may not be the same as road tire (STD)
	Regular Box Style
	Steel Spare Wheel
	Full-Size Spare Tire Stored Underbody w/Crankdown

This document contains information considered Confidential between GM and its Clients uniquely. The information provided is not intended for public disclosure. Prices, specifications, and availability are subject to change without notice, and do not include certain fees, taxes and charges that may be required by law or vary by manufacturer or region. Performance figures are guidelines only, and actual performance may vary. Photos may not represent actual vehicles or exact configurations. Content based on report preparer's input is subject to the accuracy of the input provided.

Data Version: 21610. Data Updated: Jan 30, 2024 6:47:00 PM PST.



Vehicle: [Fleet] 2024 Ford Super Duty F-250 SRW (X2B) XL 4WD SuperCab 8' Box (Complete)

Exterior

- Clearcoat Paint
- Black Front Bumper w/Black Rub Strip/Fascia Accent and 2 Tow Hooks
- Black Rear Step Bumper
- Black Side Windows Trim and Black Front Windshield Trim
- Black Door Handles
- Black Power Heated Side Mirrors w/Convex Spotter, Manual Folding and Turn Signal Indicator
- Manual Extendable Trailer Style Mirrors
- Fixed Rear Window
- Light Tinted Glass
- Variable Intermittent Wipers
- Aluminum Panels
- Black Grille
- Tailgate Rear Cargo Access
- Reverse Opening Rear Doors
- Tailgate/Rear Door Lock Included w/Power Door Locks
- Boxside Steps
- Autolamp Auto On/Off Aero-Composite Halogen Daytime Running Lights Preference Setting Headlamps w/Delay-Off
- Cargo Lamp w/High Mount Stop Light
- Perimeter/Approach Lights

Entertainment

- Radio w/Seek-Scan, Clock and Speed Compensated Volume Control
- Radio: AM/FM Stereo w/MP3 Player -inc: 4 speakers
- Fixed Antenna
- SYNC 4 -inc: 8" LCD capacitive touchscreen w/swipe capability, wireless phone connection, cloud connected, AppLink w/app catalog, 911 Assist, Apple CarPlay and Android Auto compatibility and digital owner's manual
- 2 LCD Monitors In The Front

Interior

- 4-Way Driver Seat -inc: Manual Recline and Fore/Aft Movement
- 4-Way Passenger Seat -inc: Manual Recline and Fore/Aft Movement
- 60-40 Folding Split-Bench Front Facing Fold-Up Cushion Rear Seat

This document contains information considered Confidential between GM and its Clients uniquely. The information provided is not intended for public disclosure. Prices, specifications, and availability are subject to change without notice, and do not include certain fees, taxes and charges that may be required by law or vary by manufacturer or region. Performance figures are guidelines only, and actual performance may vary. Photos may not represent actual vehicles or exact configurations. Content based on report preparer's input is subject to the accuracy of the input provided.
Data Version: 21610. Data Updated: Jan 30, 2024 6:47:00 PM PST.



Vehicle: [Fleet] 2024 Ford Super Duty F-250 SRW (X2B) XL 4WD SuperCab 8' Box (Complete)

Interior	
	Manual Tilt/Telescoping Steering Column
	Gauges -inc: Speedometer, Odometer, Oil Pressure, Engine Coolant Temp, Tachometer, Transmission Fluid Temp, Engine Hour Meter, Trip Odometer and Trip Computer
	Power Rear Windows
	FordPass Connect 5G Mobile Hotspot Internet Access
	Rear Cupholder
	Remote Keyless Entry w/Integrated Key Transmitter, Illuminated Entry and Panic Button
	Cruise Control w/Steering Wheel Controls
	Manual Air Conditioning
	HVAC -inc: Underseat Ducts
	Illuminated Locking Glove Box
	Interior Trim -inc: Chrome Interior Accents
	Full Cloth Headliner
	Urethane Gear Shifter Material
	HD Vinyl 40/20/40 Split Bench Seat -inc: center armrest, cupholder, storage and driver's side manual lumbar
	Day-Night Rearview Mirror
	Passenger Visor Vanity Mirror
	Full Overhead Console w/Storage and 2 12V DC Power Outlets
	Front Map Lights
	Fade-To-Off Interior Lighting
	Full Vinyl/Rubber Floor Covering
	Pickup Cargo Box Lights
	Smart Device Remote Engine Start
	Instrument Panel Covered Bin and Dashboard Storage
	Power 1st Row Windows w/Driver And Passenger 1-Touch Up/Down
	Delayed Accessory Power
	Power Door Locks
	Driver Information Center
	Trip Computer
	Outside Temp Gauge
	Digital/Analog Appearance

This document contains information considered Confidential between GM and its Clients uniquely. The information provided is not intended for public disclosure. Prices, specifications, and availability are subject to change without notice, and do not include certain fees, taxes and charges that may be required by law or vary by manufacturer or region. Performance figures are guidelines only, and actual performance may vary. Photos may not represent actual vehicles or exact configurations. Content based on report preparer's input is subject to the accuracy of the input provided.

Data Version: 21610. Data Updated: Jan 30, 2024 6:47:00 PM PST.



Vehicle: [Fleet] 2024 Ford Super Duty F-250 SRW (X2B) XL 4WD SuperCab 8' Box (Complete)

Interior

- Seats w/Vinyl Back Material
- Manual Adjustable Front Head Restraints and Manual Adjustable Rear Head Restraints
- Securilock Anti-Theft Ignition (pats) Immobilizer
- 2 12V DC Power Outlets
- Air Filtration

Safety-Mechanical

- AdvanceTrac w/Roll Stability Control Electronic Stability Control (ESC) And Roll Stability Control (RSC)
- ABS And Driveline Traction Control

Safety-Exterior

- Side Impact Beams

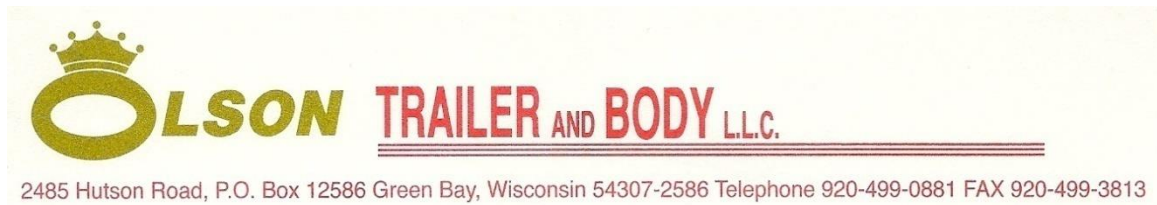
Safety-Interior

- Dual Stage Driver And Passenger Seat-Mounted Side Airbags
- Tire Specific Low Tire Pressure Warning
- Dual Stage Driver And Passenger Front Airbags w/Passenger Off Switch
- Safety Canopy System Curtain 1st And 2nd Row Airbags
- Outboard Front Lap And Shoulder Safety Belts -inc: Rear Center 3 Point and Height Adjusters
- Back-Up Camera

WARRANTY

- Basic Years: 3
- Basic Miles/km: 36,000
- Drivetrain Years: 5
- Drivetrain Miles/km: 60,000
- Corrosion Years: 5
- Corrosion Miles/km: Unlimited
- Roadside Assistance Years: 5
- Roadside Assistance Miles/km: 60,000

This document contains information considered Confidential between GM and its Clients uniquely. The information provided is not intended for public disclosure. Prices, specifications, and availability are subject to change without notice, and do not include certain fees, taxes and charges that may be required by law or vary by manufacturer or region. Performance figures are guidelines only, and actual performance may vary. Photos may not represent actual vehicles or exact configurations. Content based on report preparer's input is subject to the accuracy of the input provided.
Data Version: 21610. Data Updated: Jan 30, 2024 6:47:00 PM PST.



VILLAGE OF ALLOUEZ

Quote: 72542-WH-1

Date: 02/05/24

Delivery Date: STOCK - 4 WEEKS

Terms: NET

Ship Via: FOB GREEN BAY

Quoted By WALLY HENDERSON

Quantity	Part or Model No.	Description	Price	
		FURNISH AND INSTALL		
		WESTERN ULTRA-MOUNT 8 1/2 FT MVP PLUS V-PLOW		
		*29" HIGH X 14 GAUGE MOLDBOARD WITH (8) VERTICAL		
		RIBS, AND (4) COMPRESSION TRIP SPRINGS, FULL TRIP		
		CUTTING EDGES ON BOTH WINGS, RE-DESIGNED FLO-STAT		
		HYDRAULICS (FASTER OPERATING SPEEDS) AND 1 3/4" X 11"		
		DOUBLE ACTING POWER ANGLE CYLINDERS FOR BACK		
		DRAGGING, AND HANDHELD CAB COMMAND CONTROL		
		*NIGHTHAWK REFLECTIVE OPTIC HALOGEN PLOW LIGHTS		
		*ULTRAMOUNT HITCH ALLOWS FOR SIMPLER ATTACH AND		
		DETACH (NO MORE PINS AND CLIPS) AND HAS REMOVABLE		
		RECEIVERS FOR ADDITIONAL CLEARANCE		
		*WESTERN RUBBER SNOW DEFLECTOR		
		PRICE:	\$8380	00
		OPTION:		
		TRUCK SIDE SET UP TO INCLUDE MOUNT, WIRING, MODULE,		
		RECEIVERS, AND CONTROL PRICE:	\$2500	00

This Quotation is Subject to the Additional Terms & Conditions on the Reverse Side

<input type="checkbox"/> If This Box is Checked you Accept As Shown.	
Please Sign and Return Acceptance Copy	Authorized Signature Date

VILLAGE OF ALLOUEZ

Allouez Village Hall • 1900 Libal Street • Green Bay, Wisconsin 54301-2453
Phone No.: (920) 448-2800 • Fax No.: (920) 448-2850

Department of Public Works

Date: February 10th, 2024

2024 STREET RESURFACING BID RESULTS

Bids for this year's street resurfacing project were opened on Thursday the 8th of February. This year's bid proposal included a base bid along with 2 alternate bid items. The street resurfacing work as listed on the bid form includes:

Base Bid

- Kenney Street- Libal St. to Jenkel Terr.
- Sunrise Lane- Libal St. to Briar Ln.
- Brenner Place- Bittersweet Ave. to Termini
- Little Road- Ducharme Ln. to Allouez Ave.
- Memory Avenue- Libal St. to E. River Dr.
- Miscellaneous Street Patching and Repair

Alternate Bids

- W. Mission Rd- Ducharme Ln. to S. Webster Ave.
- Sunset Circle

One bid was received with the resulting bid tabulation attached. In the evaluation of the bids, Village may select one or both of the alternate bids or Village may choose not to accept any alternate bids. The sum of the Base Bid and Alternates accepted by the Owner will determine the "Adjusted Total Base Bid".

The funding for the street resurfacing project is supported primarily by the Public Work's paving account, however a portion of the project cost is allocated to other street and utility accounts. Local Road Improvement Project funding in the amount of approximately \$90,000 is expected from the State and will be used to offset Sunrise Ln paving cost.

Besides paving, the project includes a number of other street and utility repairs. Those include; replacement of defective curb, replacement and adjustment of manhole and inlet covers, spot repairs to inlet and manholes, spot repair to storm and sanitary sewer, replacement of defective sidewalk, and landscape restoration.

Budgeted funds in the Public Works and Utility accounts will allow for the addition of an Alternate bid. Staff is recommending the addition of Alternate No.2 – Sunset Circle to the base bid amount.

The "Adjusted Total Base Bid" with selection of Alternate Bid No. 2 is \$781,910.60.

In general, weather permitting work may begin any time after the execution of the contract, submittal of project schedule and the shop drawings. For the most part, all work shall be completed by October 4th, 2024.

Suggested Motion:

A recommendation to the Village Board to accept NEA's Base Bid and Alternate No. 2 Bid (Sunset Cir.) for an "Adjusted Total Base Bid" amount of \$781,910.60.

Sean J. Gehin, P.E.
V. of Allouez DPW

VILLAGE OF ALLOUEZ

Allouez Village Hall • 1900 Libal Street. • Green Bay, Wisconsin 54301-2453
Phone No.: (920) 448-2800 • Fax No.: (920) 448-2853

Department of Public Works

Contract AL - 2024 - 01 Bid Opening 2024 Street Resurfacing Project

Thursday February 8, 2024 at 10:30 a.m.
Tabulation Sheet

Contractor:	Northeast Asphalt, Inc					
Bid Bond	X					
Signed Proposal	X					
List of Proposed Subcontractors	X					
Acknowledgement of Addenda	X					
AL-2024-01 Total Base Bid:	\$704,535.00	\$	\$	\$	\$	\$
Alternate #1	\$47,589.00	\$	\$	\$	\$	\$
Alternate #2	\$77,375.60	\$	\$	\$	\$	\$

The sum of the Base Bid and any Alternate bids accepted by the Owner will determine the "Adjusted Total Base Bid." Bids will be compared on the basis of the "Adjusted Total Base Bid" and this amount will be the basis for determining the lowest Bidder.

Bid Tabulations

VILLAGE OF ALLOUEZ 2024 STREET RESURFACING PROJECT
 CONTRACT AL-2024-01
 Bid Opening: February 8, 2024 at 10:30 am

		Kenney Street (Libal St to Jenkel Ter) +/- 815'			Northeast Asphalt, Inc		X	
ITEM	WisDOT Spec Section No.	Bid Item Description	UNIT	QTY	UNIT PRICE	TOTAL	UNIT PRICE	TOTAL
1	204.0120	Removing Asphaltic Surface Milling (2-Inch)	SY	3,020	\$2.40	\$7,248.00		\$0.00
2	211.0100.S	Prepare Foundation for Asphaltic Paving	SY	393	\$1.15	\$451.95		\$0.00
3	460.5223.S	HMA Pavement 3 LT 58-28 S	TON	45	\$79.05	\$3,557.25		\$0.00
4	460.5224.S	HMA Pavement 4 LT 58-28 S	TON	365	\$71.05	\$25,933.25		\$0.00
5	-	Spot Repair Concrete Curb & Gutter 24-Inch	LF	250	\$44.85	\$11,212.50		\$0.00
6	611.8110.S	Adjusting Ex. Manhole Covers (Storm and Sanitary)	EA	4	\$950.00	\$3,800.00		\$0.00
7	611.8115.S	Adjusting Ex. Inlet Cover	EA	4	\$800.00	\$3,200.00		\$0.00
8	-	Water For Seeded Areas	MGAL	1	\$40.00	\$40.00		\$0.00
9	-	Topsoil, Seed, Fertilizer and Mulch	SY	60	\$12.00	\$720.00		\$0.00
SUBTOTAL:						\$56,162.95		\$0.00

		Sunrise Lane (Libal St to E. Briar Ln.) +/- 1,975' L RIP Funded			Northeast Asphalt, Inc		X	
ITEM	WisDOT Spec Section No.	Bid Item Description	UNIT	QTY	UNIT PRICE	TOTAL	UNIT PRICE	TOTAL
1	204.0110	Removing Asphaltic Surface	SY	6,379	\$2.40	\$15,309.60		\$0.00
2	211.0100.S	Prepare Foundation for Asphaltic Paving	SY	6,379	\$1.60	\$10,206.40		\$0.00
3	460.5223.S	HMA Pavement 3 LT 58-28 S	TON	800	\$69.80	\$55,840.00		\$0.00
4	460.5224.S	HMA Pavement 4 LT 58-28 S	TON	625	\$73.10	\$45,687.50		\$0.00
5	-	Repair Concrete Driveway 6-Inch	SF	1,000	\$7.10	\$7,100.00		\$0.00
6	-	Spot Repair Concrete Curb & Gutter 24-Inch	LF	800	\$44.85	\$35,880.00		\$0.00
7	-	Neenah R-1550 Type C Non-Rock Self Sealed San. MH Cover	EA	7	\$1,500.00	\$10,500.00		\$0.00
8	611.8110.S	Adjusting Ex. Manhole Covers (Storm)	EA	5	\$950.00	\$4,750.00		\$0.00
9	611.8115.S	Adjusting Ex. Inlet Covers	EA	10	\$800.00	\$8,000.00		\$0.00
10	-	Internal Sanitary Sewer Chimney Seal	EA	7	\$600.00	\$4,200.00		\$0.00
11	628.7015	Inlet Protection, Type C	EA	10	\$95.00	\$950.00		\$0.00
12	-	Water For Seeded Areas	MGAL	4	\$40.00	\$160.00		\$0.00
13	-	Topsoil, Seed, Fertilizer and Mulch	SY	180	\$12.00	\$2,160.00		\$0.00
14	690.015	Sawing Asphalt (At Project Limits)	LF	100	\$1.50	\$150.00		\$0.00
SUBTOTAL:						\$200,893.50		\$0.00

		Brenner Place (Termini to Bittersweet Ave.) +/- 875'			Northeast Asphalt, Inc		X	
ITEM	WisDOT Spec Section No.	Bid Item Description	UNIT	QTY	UNIT PRICE	TOTAL	UNIT PRICE	TOTAL
1	204.0110	Removing Asphaltic Surface	SY	3,822	\$2.40	\$9,172.80		\$0.00
2	211.0100.S	Prepare Foundation for Asphaltic Paving	SY	3,822	\$2.50	\$9,555.00		\$0.00
3	460.5223.S	HMA Pavement 3 LT 58-28 S	TON	480	\$70.80	\$33,984.00		\$0.00
4	460.5224.S	HMA Pavement 4 LT 58-28 S	TON	375	\$76.35	\$28,631.25		\$0.00
5	-	Spot Repair Concrete Curb & Gutter 24-Inch	LF	310	\$44.85	\$13,903.50		\$0.00
6	-	Neenah R-1550 Type C Non-Rock Self Sealed San. MH Cover	EA	3	\$1,500.00	\$4,500.00		\$0.00
7	611.8110.S	Adjusting Ex. Manhole Covers (Storm)	EA	5	\$950.00	\$4,750.00		\$0.00
8	611.8115.S	Adjusting Ex. Inlet Covers	EA	6	\$800.00	\$4,800.00		\$0.00
9	-	Internal Sanitary Sewer Chimney Seal	EA	3	\$600.00	\$1,800.00		\$0.00
10	628.7015	Inlet Protection, Type C	EA	8	\$95.00	\$760.00		\$0.00
11	-	Water For Seeded Areas	MGAL	1	\$40.00	\$40.00		\$0.00
12	-	Topsoil, Seed, Fertilizer and Mulch	SY	70	\$12.00	\$840.00		\$0.00
13	690.0150	Sawing Asphalt (At Project Limits)	LF	54	\$1.50	\$81.00		\$0.00
SUBTOTAL:						\$112,817.55		\$0.00

		Little Rd. (W. Allouez Ave. to Du Charme Ln.) +/- 620'			XXX		YYY	
ITEM	WisDOT Spec Section No.	Bid Item Description	UNIT	QTY	UNIT PRICE	TOTAL	UNIT PRICE	TOTAL
1	204.0110	Removing Asphaltic Surface	SY	1,860	\$2.40	\$4,464.00		\$0.00
2	211.0100.S	Prepare Foundation for Asphaltic Paving	SY	1,860	\$1.50	\$2,790.00		\$0.00
3	460.5223.S	HMA Pavement 3 LT 58-28 S	TON	235	\$69.80	\$16,403.00		\$0.00
4	460.5224.S	HMA Pavement 4 LT 58-28 S	TON	180	\$77.10	\$13,878.00		\$0.00
5	-	Repair Concrete Driveway 6-Inch	SF	400	\$7.10	\$2,840.00		\$0.00
6	-	Spot Repair Concrete Curb & Gutter 24-Inch	LF	300	\$44.85	\$13,455.00		\$0.00
7	-	Neenah R-1550 Type C Non-Rock Self Sealed San. MH Cover	EA	2	\$1,500.00	\$3,000.00		\$0.00
8	611.8110.S	Adjusting Ex. Manhole Covers (Storm)	EA	1	\$950.00	\$950.00		\$0.00
9	611.8115.S	Adjusting Ex. Inlet Covers	EA	4	\$800.00	\$3,200.00		\$0.00
10	-	Neenah R-3067-L Inlet Cover	EA	1	\$1,750.00	\$1,750.00		\$0.00
11	608.3012.S	Storm Sewer Pipe Class III-A 12-Inch	LF	48	\$125.00	\$6,000.00		\$0.00
12	611.1230.S	Catch Basins 2x3-Ft	EA	1	\$3,910.00	\$3,910.00		\$0.00
13	-	Internal Sanitary Sewer Chimney Seal	EA	2	\$600.00	\$1,200.00		\$0.00
14	628.7015	Inlet Protection, Type C	EA	5	\$95.00	\$475.00		\$0.00
15	-	Water For Seeded Areas	MGAL	1	\$40.00	\$40.00		\$0.00
16	-	Topsoil, Seed, Fertilizer and Mulch	SY	70	\$12.00	\$840.00		\$0.00
17	690.0150	Sawing Asphalt (At Project Limits)	LF	54	\$1.50	\$81.00		\$0.00
		SUBTOTAL:				\$75,276.00		\$0.00

		Memory Ave. (Libal St. to E. River Dr.) +/- 1,515'			XXX		YYY	
ITEM	WisDOT Spec Section No.	Bid Item Description	UNIT	QTY	UNIT PRICE	TOTAL	UNIT PRICE	TOTAL
1	204.0110	Removing Asphaltic Surface	SY	4,900	\$2.40	\$11,760.00		\$0.00
2	211.0100.S	Prepare Foundation for Asphaltic Surface	SY	4,900	\$1.40	\$6,860.00		\$0.00
3	460.5223.S	HMA Pavement 3 LT 58-28 S	TON	620	\$69.10	\$42,842.00		\$0.00
4	460.5224.S	HMA Pavement 4 LT 58-28 S	TON	480	\$73.90	\$35,472.00		\$0.00
5	-	Spot Repair Concrete Curb & Gutter 24-Inch	LF	500	\$44.85	\$22,425.00		\$0.00
6	-	Neenah R-1550 Type C Non-Rock Self Sealed San. MH Cover	EA	5	\$1,500.00	\$7,500.00		\$0.00
7	611.8110.S	Adjusting Ex. Manhole Covers (Storm)	EA	6	\$950.00	\$5,700.00		\$0.00
8	611.8115.S	Adjusting Ex. Inlet Covers	EA	10	\$800.00	\$8,000.00		\$0.00
9	-	Internal Sanitary Sewer Chimney Seal	EA	5	\$600.00	\$3,000.00		\$0.00
10	628.7015	Inlet Protection, Type C	EA	10	\$95.00	\$950.00		\$0.00
11	-	Water For Seeded Areas	MGAL	3	\$40.00	\$120.00		\$0.00
12	-	Topsoil, Seed, Fertilizer and Mulch	SY	115	\$12.00	\$1,380.00		\$0.00
13	690.0150	Sawing Asphalt (At Project Limits)	LF	109	\$1.50	\$163.50		\$0.00
		SUBTOTAL:				\$146,172.50		\$0.00

		Street Patching and Miscellaneous Work			Northeast Asphalt, Inc		X	
ITEM	WisDOT Spec Section No.	Bid Item Description	UNIT	QTY	UNIT PRICE	TOTAL	UNIT PRICE	TOTAL
1	-	Street Patching < 40 sy	SY	150	\$74.00	\$11,100.00		\$0.00
2	-	Street Patching > 40 sy	SY	900	\$43.00	\$38,700.00		\$0.00
3	-	Repair Concrete Driveway 6-Inch	SF	600	\$7.10	\$4,260.00		\$0.00
4	-	Spot Repair Concrete Curb & Gutter 24-Inch	LF	150	\$44.85	\$6,727.50		\$0.00
5	-	Spot Repair Concrete Sidewalk 4-Inch	SF	500	\$7.25	\$3,625.00		\$0.00
6	-	Spot Repair Concrete Sidewalk 6-Inch	SF	500	\$7.10	\$3,550.00		\$0.00
7	-	Neenah R-1550 Type C Non-Rock Storm MH Cover	EA	2	\$1,850.00	\$3,700.00		\$0.00
8	-	Neenah R-3067-L Inlet Cover	EA	2	\$1,675.00	\$3,350.00		\$0.00
9	611.8110.S	Adjusting Ex. Manhole Covers	EA	2	\$1,150.00	\$2,300.00		\$0.00
10	611.8115.S	Adjusting Ex. Inlet Cover	EA	2	\$800.00	\$1,600.00		\$0.00
11	-	Relay Storm Sewer Pipe Class III-A ≤ 12-inch	LF	100	\$145.00	\$14,500.00		\$0.00
12	-	Remove and Replace Catch Basins 2x3-Ft	EA	4	\$4,500.00	\$18,000.00		\$0.00
13	-	Topsoil, Seed, Fertilizer and Mulch	SY	150	\$12.00	\$1,800.00		\$0.00
		SUBTOTAL				\$113,212.50		\$0.00

AL-2024-01 Total Base Bid:					\$704,535.00	\$0.00
----------------------------	--	--	--	--	--------------	--------

		Alternate 1 - W. Mission St. (Du Charme Ln. to S. Webster Ave.) +/- 910'			Northeast Asphalt, Inc		X	
ITEM	WisDOT Spec Section No.	Bid Item Description	UNIT	QTY	UNIT PRICE	TOTAL	UNIT PRICE	TOTAL
1	204.0120	Removing Asphaltic Surface Milling (2-Inch)	SY	2,130	\$2.65	\$5,644.50		\$0.00
2	460.5224.S	HMA Pavement 4 LT 58-28 S	TON	250	\$74.30	\$18,575.00		\$0.00
3	-	Spot Repair Concrete Curb & Gutter 24-Inch	LF	270	\$44.85	\$12,109.50		\$0.00
4	611.8110.S	Adjusting Ex. Manhole Covers (Sanitary and Storm)	EA	6	\$950.00	\$5,700.00		\$0.00
5	611.8115.S	Adjusting Ex. Inlet Cover	EA	6	\$800.00	\$4,800.00		\$0.00
6	-	Water For Seeded Areas	MGAL	1	\$40.00	\$40.00		\$0.00
7	-	Topsoil, Seed, Fertilizer and Mulch	SY	60	\$12.00	\$720.00		\$0.00
		SUBTOTAL:				\$47,589.00		\$0.00

		Alternate 2 - Sunset Circle (Riverside Dr. to Termini) +/- 1,400'			Northeast Asphalt, Inc		X	
ITEM	WisDOT Spec Section No.	Bid Item Description	UNIT	QTY	UNIT PRICE	TOTAL	UNIT PRICE	TOTAL
1	204.0120	Removing Asphaltic Surface Milling (2-Inch)	SY	3,267	\$2.40	\$7,840.80		\$0.00
2	460.5224.S	HMA Pavement 4 LT 58-28 S	TON	376	\$74.80	\$28,124.80		\$0.00
3	-	Spot Repair Concrete Curb & Gutter 24-Inch	LF	400	\$44.85	\$17,940.00		\$0.00
4	611.8110.S	Adjusting Ex. Manhole Covers (Sanitary and Storm)	EA	15	\$950.00	\$14,250.00		\$0.00
5	611.8115.S	Adjusting Ex. Inlet Cover	EA	10	\$800.00	\$8,000.00		\$0.00
6	-	Water For Seeded Areas	MGAL	2	\$40.00	\$80.00		\$0.00
7	-	Topsoil, Seed, Fertilizer and Mulch	SY	95	\$12.00	\$1,140.00		\$0.00
		SUBTOTAL:				\$77,375.60		\$0.00

		Supplemental Bid Items			Northeast Asphalt, Inc		X	
ITEM	WisDOT Spec Section No.	Bid Item Description	UNIT	QTY	UNIT PRICE	TOTAL	UNIT PRICE	TOTAL
1	-	Excavation Below Subgrade	CY	200	\$20.00	\$4,000.00		\$0.00
2	305.0125.S	Base Aggregate Dense 1 1/4-Inch	CY	200	\$28.00	\$5,600.00		\$0.00
3	305.0135	Base Aggregate Dense 3-Inch	CY	200	\$28.00	\$5,600.00		\$0.00
4	602.0515	Curb Ramp Detectable Warning Field Natural Patina	SF	24	\$35.00	\$840.00		\$0.00
5	-	Geogrid Reinforcement	SY	650	\$2.00	\$1,300.00		\$0.00
6	-	Salvaged Asphaltic Base	CY	250	\$20.00	\$5,000.00		\$0.00
7	611.0420.S	Reconstructing Manholes	EA	2	\$3,300.00	\$6,600.00		\$0.00

VILLAGE OF ALLOUEZ

Allouez Village Hall • 1900 Libal Street • Green Bay, Wisconsin 54301-2453
Phone No.: (920) 448-2800 • Fax No.: (920) 448-2850

Department of Public Works

Date: January 11th, 2024

2024 SANITARY SEWER LINING PROJECT BID RESULTS

Bids for this year's sanitary sewer lining project were opened today the 16th of January. Two bids were received with the resulting bit tabulation. Visu-Sewer, LLC is the low bidder in the amount of \$110,029.50. The estimated cost of the lining project is \$90,000.

The sewer lining project includes:

- The lining of the Brenner Place sanitary sewer (Approx. 850')
- Various segments of the Libal Street sanitary sewer (Approx. 1020')

Bond and Sewer Utility budgeted funds are anticipated to pay for the work. The sewer lining to be completed in conjunction with Libal Street Utility Improvement Project to begin early to middle of March.

Suggested Motion.

Recommendation to the Village Board to accept the low bid submitted by Visu-Sewer, Inc. in the amount of \$110,029.50.

VILLAGE OF ALLOUEZ

Allouez Village Hall • 1900 Libal Street • Green Bay, Wisconsin 54301-2453
Phone No.: (920) 448-2800 • Fax No.: (920) 448-2853

Department of Public Works

Contract AL-2024-02 Bid Opening

Tuesday, January 16, 2024 at 10:30 am

Tabulation Summary Sheet

Contractor:	Visu-Sewer, LLC	Insituform Technologies USA, LLC				
Bid Bond	X	X				
Signed Proposal	X	X				
List of Proposed Subcontractors	X	X				
Acknowledgement of Addendum #1: Signed and Dated	X	X				
Total Bid for AL-2024-02:	\$110,029.50	\$155,172.49				
Supplemental Bid Item (not used to determine low bidder)	\$7,500.00	\$8,110.30				

Bid Tabulations

VILLAGE OF ALLOUEZ: 2024 Sewer Lining Project
 CONTRACT: AL-2024-02
 BID OPENING: Tuesday, January 16, 2024 at 10:30 am

					Visu-Sewer, LLC		Insituform Technologies USA, LLC	
ITEM	WisDOT Spec Section No.	Bid Item Description	UNIT	QTY	UNIT PRICE	TOTAL	UNIT PRICE	TOTAL
1	-	Brenner Place 8-inch CIPP Sanitary Sewer	LF	846	\$46.50	\$39,339.00	\$56.38	\$47,697.48
2	-	Libal Street 8-inch CIPP Sanitary Sewer	LF	577	\$46.50	\$26,830.50	\$70.66	\$40,770.82
3	-	Libal Street 18-inch CIPP Sanitary Sewer	LF	440	\$86.50	\$38,060.00	\$119.82	\$52,720.80
4	-	Webster Avenue Internal Pipe Repair Sleeve +/- 8 LF	EA	1	\$5,800.00	\$5,800.00	\$13,983.39	\$13,983.39
TOTAL:						\$110,029.50		\$155,172.49

		Supplemental Bid Items	Visu-Sewer, LLC				Insituform Technologies USA, LLC	
ITEM	WisDOT Spec Section No.	Bid Item Description	UNIT	QTY	UNIT PRICE	TOTAL	UNIT PRICE	TOTAL
1	-	Chemical Grout Sewer	Ea	10	\$750.00	\$7,500.00	\$811.03	\$8,110.30

VILLAGE OF ALLOUEZ

Allouez Village Hall • 1900 Libal Street • Green Bay, Wisconsin 54301-2453
Phone No.: (920) 448-2800 • Fax No.: (920) 448-2850

Department of Public Works

Date: February 6th, 2024

AL-2024-03, LIBAL ST. UTILITY IMPROVEMENT PROJECT BID RESULTS

Bids for the Libal St. Utility Improvement project were open today the 6th of February. Seven bids were received with the resulting bid tabulation attached. Feaker & Sons Co., Inc. was the low bidder in the amount of \$557,799.50. The estimated cost of the project was \$540,000.

The Utility improvements include:

- Replacement of sanitary laterals and water services (STH 172 to Allouez Ave.)
- Replacement of ex. concrete sanitary sewer with new PVC Pipe (Approx. 800 ft)
- Spot repair to sanitary manholes

Village staff anticipates using Bond funding to pay for the work.

The utility improvements are to be completed ahead of the Libal Street Reconstruction Project. Work is anticipated to begin early to middle of March.

Suggested Motion.

Staff recommendation to the Village Board to award contract to the low bidder, Feaker & Sons Co., in the amount of \$557,799.50.

VILLAGE OF ALLOUEZ

Allouez Village Hall • 1900 Libal Street. • Green Bay, Wisconsin 54301-2453
Phone No.: (920) 448-2800 • Fax No.: (920) 448-2853

Department of Public Works

Contract AL - 2024-03 Bid Opening
Tuesday February 6, 2024 at 10:30 a.m.
Tabulation Summary Sheet

Contractor Name:	Feakers & Sons Co., Inc	David Tenor Corp	Peters Concrete Co.	DeGroot, Inc.	PTS Contractors, Inc.	vinton Construction Co.
Bid Bond	X	X	X	X	X	X
Signed Proposal	X	X	X	X	X	X
List of Proposed Subcontractors	X	X	X	X	X	X
Acknowledgement of Addendum	N/A	N/A	N/A	N/A	N/A	N/A
AL-2024-03 Base Bid Total	\$557,799.50	\$607,898.00	\$644,666.00	\$653,576.85	\$739,226.00	\$801,119.13

Contractor Name:	Dorner Inc					
Bid Bond	X					
Signed Proposal	X					
List of Proposed Subcontractors	X					
Acknowledgement of Addendum	N/A	N/A	N/A	N/A	N/A	N/A
AL-2024-03 Base Bid Total	\$838,216.00	\$	\$	\$	\$	\$

VILLAGE OF ALLOUEZ LIBAL STREET UTILITY IMPROVEMENT PROJECT
LIBAL STREET
CONTRACT AL-2024-03
Bid Opening: February 6, 2024 at 10:30 am

BASE BID					1		2		3		4		5		6		7	
					Feaker & Sons Co., Inc		David Tenor Corp		Peters Concrete Co.		DeGroot, Inc		PTS Contractors, Inc		Vinton Construction Co.		Dorner inc.	
ITEM	WisDOT Spec Section No.	Bid Item Description	Estimated Quantity	UNITS	UNIT PRICE	TOTAL	UNIT PRICE	TOTAL	UNIT PRICE	TOTAL	UNIT PRICE	TOTAL	UNIT PRICE	TOTAL	UNIT PRICE	TOTAL	UNIT PRICE	TOTAL
1	204.0210.5	Removing Manholes	1	EA	360.00	360.00	350.00	350.00	500.00	500.00	505.00	505.00	290.00	290.00	413.00	413.00	500.00	500.00
2	-	Removing Sanitary Sewer	763	LF	3.00	2,289.00	4.00	3,052.00	2.00	1,526.00	5.05	3,853.15	1.00	763.00	0.01	7.63	2.00	1,526.00
3	-	Salvage Existing Hydrants	3	EA	720.00	2,160.00	2,400.00	7,200.00	2,000.00	6,000.00	1,907.80	5,723.40	1,510.00	4,530.00	3,200.00	9,600.00	1,500.00	4,500.00
4	305.0125	Base Aggregate Dense 1¼-inch	75	CY	30.20	2,265.00	30.00	2,250.00	30.00	2,250.00	20.20	1,515.00	25.00	1,875.00	18.00	1,350.00	29.00	2,175.00
5	465.0120.S	Asphaltic Surface Driveways and Sidewalk	75	TON	147.00	11,025.00	150.00	11,250.00	140.00	10,500.00	209.13	15,684.75	300.00	22,500.00	247.00	18,525.00	189.00	14,175.00
6	-	Sanitary Sewer Manholes (48-Inch Dia)	8	VF	560.00	4,480.00	690.00	5,520.00	455.00	3,640.00	684.83	5,478.64	711.00	5,688.00	655.00	5,240.00	496.00	3,968.00
7	-	Inside Drop (Sanitary Manhole)	5	VF	2,420.00	12,100.00	240.00	1,200.00	1,055.00	5,275.00	338.08	1,690.40	615.00	3,075.00	575.00	2,875.00	285.00	1,425.00
8	-	Neenah R-1550 Type C Non-Rock Self Sealed San. MH Cover	2	EA	800.00	1,600.00	625.00	1,250.00	550.00	1,100.00	574.69	1,149.38	875.00	1,750.00	730.00	1,460.00	585.00	1,170.00
9	-	Internal Sanitary Sewer Chimney Seal	2	EA	500.00	1,000.00	425.00	850.00	600.00	1,200.00	530.25	1,060.50	570.00	1,140.00	565.00	1,130.00	474.00	948.00
10	-	Sanitary Sewer PVC-SDR 35 8-Inch	288	LF	105.00	30,240.00	90.00	25,920.00	89.55	25,790.40	99.23	28,578.24	118.00	33,984.00	153.00	44,064.00	102.00	29,376.00
11	-	Sanitary Sewer PVC-SDR 35 12-Inch	243	LF	131.00	31,833.00	112.00	27,216.00	113.30	27,531.90	132.04	32,085.72	148.00	35,964.00	184.00	44,712.00	143.00	34,749.00
12	-	Sanitary Sewer PVC-SDR 35 21-Inch	237	LF	260.00	61,620.00	260.00	61,620.00	181.15	42,932.55	256.95	60,897.15	285.00	67,545.00	396.00	93,852.00	302.00	71,574.00
13	-	Sanitary Sewer Lateral PVC Sch 40 4-Inch & 6-Inch	2,555	LF	84.00	214,620.00	94.00	240,170.00	111.65	285,265.75	112.38	287,130.90	144.00	367,920.00	131.00	334,705.00	150.00	383,250.00
14	-	Poly SDR 9-200 Water Service	2,518	LF	60.00	151,080.00	75.00	188,850.00	80.80	203,454.40	70.80	178,274.40	64.00	161,152.00	80.00	201,440.00	100.00	251,800.00
15	-	Pothole Ex. Watermain at Clover Ln	1	EA	1,000.00	1,000.00	800.00	800.00	500.00	500.00	1,515.00	1,515.00	999.00	999.00	1,233.00	1,233.00	800.00	800.00
16	619.1000.S	Mobilization	1	LS	3,200.00	3,200.00	4,000.00	4,000.00	4,000.00	4,000.00	3,030.00	3,030.00	1,750.00	1,750.00	28,000.00	28,000.00	11,500.00	11,500.00
17	628.7015	Inlet Protection Type C	36	EA	75.00	2,700.00	100.00	3,600.00	50.00	1,800.00	45.45	1,636.20	116.00	4,176.00	150.00	5,400.00	75.00	2,700.00
18	643.0100.S	Temporary Traffic Control	1	LS	17,430.00	17,430.00	16,800.00	16,800.00	16,600.00	16,600.00	17,101.32	17,101.32	17,300.00	17,300.00	1,000.00	1,000.00	15,500.00	15,500.00
19	-	Water for Seeded Areas	10	MGAL	105.00	1,050.00	50.00	500.00	40.00	400.00	103.02	1,030.20	105.00	1,050.00	75.00	750.00	75.00	750.00
20	-	Topsoil, Seed, Fertilizer, and Mulch	550	SY	10.45	5,747.50	10.00	5,500.00	8.00	4,400.00	10.25	5,637.50	10.50	5,775.00	9.75	5,362.50	10.60	5,830.00
BASE BID TOTAL:					\$557,799.50		\$607,898.00		\$644,666.00		\$653,576.85		\$739,226.00		\$801,119.13		\$838,216.00	

SUPPLEMENTAL BID ITEMS					Feaker & Sons Co., Inc		David Tenor Corp		Peters Concrete Co.		DeGroot, Inc		PTS Contractors, Inc		Vinton Construction Co.		Dorner inc.	
ITEM	WisDOT Spec Section No.	Bid Item Description	Estimated Quantity	UNITS	UNIT PRICE	TOTAL	UNIT PRICE	TOTAL	UNIT PRICE	TOTAL	UNIT PRICE	TOTAL	UNIT PRICE	TOTAL	UNIT PRICE	TOTAL	UNIT PRICE	TOTAL
1	-	Open Excavate Private Sanitary Sewer Lateral PVC Sch 40	80	LF	70.00	\$5,600.00	103.00	\$8,240.00	105.00	\$8,400.00	95.19	\$7,615.20	103.00	\$8,240.00	175.00	\$14,000.00	102.00	\$8,160.00
2	-	Pipe Burst Sanitary Sewer Lateral 4-Inch	1,500	LF	5.25	\$7,875.00	5.15	\$7,725.00	5.00	\$7,500.00	5.15	\$7,725.00	5.30	\$7,950.00	5.00	\$7,500.00	5.10	\$7,650.00
3	-	Inside Sanitary Sewer Lateral Reconnection	45	EA	3,150.00	\$141,750.00	2,830.00	\$127,350.00	3,000.00	\$135,000.00	2,833.05	\$127,487.25	2,915.00	\$131,175.00	2,750.00	\$123,750.00	2,805.00	\$126,225.00
4	-	Inside Installation of a Backwater Valve	23	EA	105.00	\$2,415.00	260.00	\$5,980.00	250.00	\$5,750.00	257.55	\$5,923.65	265.00	\$6,095.00	250.00	\$5,750.00	255.00	\$5,865.00
5	-	10" PVC Class 150, DR 18 Watermain	40	LF	265.00	\$10,600.00	110.00	\$4,400.00	225.00	\$9,000.00	159.31	\$6,372.40	180.00	\$7,200.00	417.00	\$16,680.00	210.00	\$8,400.00

.S and - Denotes a Special Provision is included in the Specification Manual